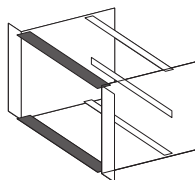


Horizontal rails



Front horizontal rail, with 10 mm extension (B2), with double screw-fastening

for type IV, IVs and VII injector/extractor handle
To accommodate guide rails and for the attachment of front panels. The double screw-fastening ensures a high level of stability even under extreme loads.

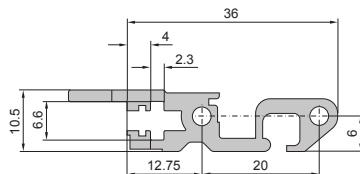
- Load test to DIN EN/IEC 61 587-1, requirement level SL1
- Shock and vibration tests undertaken as per IEC 61 373 (DIN EN 50 155), Category 1, Class B
- Front projection and pitch pattern of holes based on IEC 60 297-3-101, for the use of injector/extractor handles type IV and VII
- HP pitch pattern of holes for the precise installation of guide rails
- M4 thread on end face
- Straight-through core hole

Material:

Extruded aluminium section

Surface finish:

Clear-chromated



Usable width (HP)	Packs of	Model No. RP
84	1	9908.722

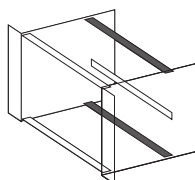
Custom lengths available upon request.

Also required:

Assembly screws M4 x 12, packs of 100, Model No. RP 3654.300.

Accessories:

Threaded inserts, Model No. RP 3684.610 (packs of 1).



Rear horizontal rail (C1)

To accommodate guide rails and for the attachment of Z rails, insulating strips or conductive strips and backplanes.

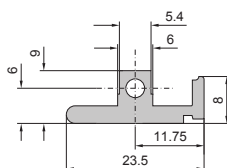
- Tapped holes M2.5 on a 1 HP pitch pattern
- HP pitch pattern of holes for the precise installation of guide rails
- M2.5 thread for the installation of Z rails or backplanes
- M4 thread on end face
- Straight-through core hole
- Horizontal rail 192 HP without machining on the end faces. Suitable for cutting to length

Material:

Extruded aluminium section

Surface finish:

Clear-chromated or anodised



Usable width (HP)	Packs of	Model No. RP
21	1	3685.991
40	1	3684.962
42	1	3684.570
63	1	3684.571
84	1	3684.572
84	2	3685.268 ¹⁾
192	1	3688.002 ²⁾

¹⁾ Including 4 assembly screws

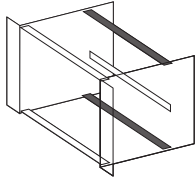
²⁾ Anodised

Custom lengths available upon request.

Also required:

Assembly screws M4 x 12, packs of 100, Model No. RP 3654.300.

Horizontal rails



Rear horizontal rail, with double screw-fastening (C6)

To accommodate guide rails and for the attachment of Z rails, insulating strips or conductive strips and backplanes. The double screw-fastening ensures a high level of stability even under extreme loads.

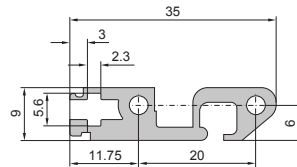
- Load test to DIN EN/IEC 61 587-1, requirement level SL1
- Shock and vibration tests undertaken as per IEC 61 373 (DIN EN 60,155), Category 1, Class B
- Tapped holes M2.5 on an HP pitch pattern
- HP pitch pattern of holes for the precise installation of guide rails
- M2.5 thread for the installation of Z rails or backplanes
- M4 thread on end face
- Straight-through core hole

Material:

Extruded aluminium section

Surface finish:

Clear-chromated or anodised



Usable width (HP)	Packs of	Model No. RP
84	1	9908.723

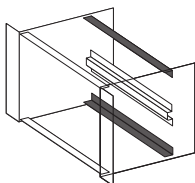
Custom lengths available upon request.

! Also required:

Assembly screws M4 x 12, packs of 100, Model No. RP 3654.300.

+ Accessories:

Threaded inserts, Model No. RP 9901.816 (packs of 2).



Rear horizontal rail, with integral Z rail (C3)

To accommodate guide rails. Integral Z rail for mounting connectors to IEC 60 603-2.

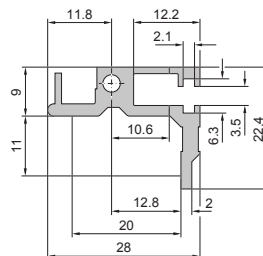
- HP pitch pattern of holes for the precise installation of guide rails
- 84 tapped holes M2.5 for connector mounting
- M4 thread on end face
- Straight-through core hole

Material:

Extruded aluminium section

Surface finish:

Clear-chromated



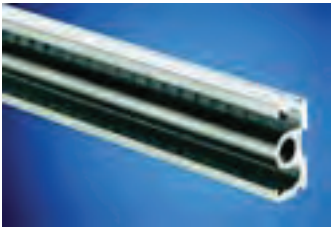
Usable width (HP)	Packs of	Model No. RP
42	1	3686.191
63	1	3686.919
84	1	3686.159

Custom lengths available upon request.

! Also required:

Assembly screws M4 x 12, packs of 100, Model No. RP 3654.300,

Horizontal rails



Rear horizontal rail, centre (D1)

When using 6U PCBs or box-type plug-in units. Facility for the attachment of Z rails, insulating strips or conductive strips.

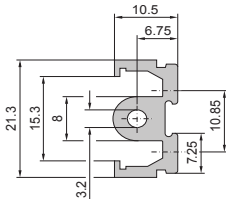
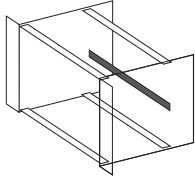
- 84 tapped holes M2.5
- M4 thread on end face
- Straight-through core hole
- Horizontal rail 192 HP for cutting to the required length

Material:

Extruded aluminium section

Surface finish:

Clear-chromated or anodised



Usable width (HP)	Packs of	Model No. RP
40	1	3684.963
42	1	3684.580
63	1	3684.581
84	1	3684.582
84	1	3685.270 ¹⁾
858.5 mm	1	3684.579
192	1	3688.003 ²⁾

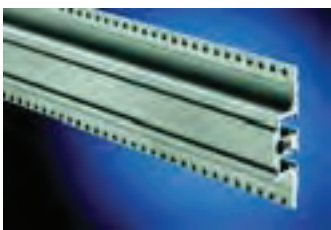
¹⁾ Including 2 assembly screws

²⁾ Anodised

Custom lengths available upon request.

! Also required:

Assembly screws M4 x 12, packs of 100, Model No. RP 3654.300.



Rear horizontal rail, centre, with integral Z rail (D2)

When using 6U PCBs or box-type plug-in units. Integral Z rail for mounting connectors to IEC 60 603-2.

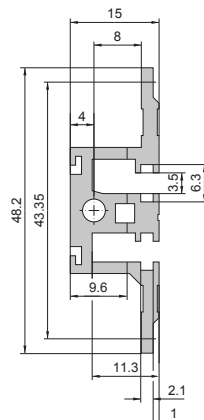
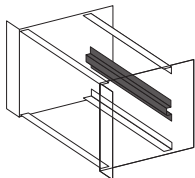
- 84 tapped holes M2.5
- M4 thread on end face
- Straight-through core hole

Material:

Extruded aluminium section

Surface finish:

Clear-chromated



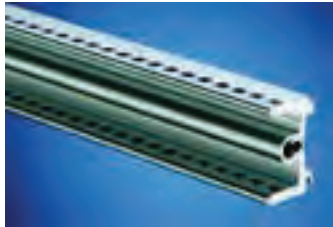
Usable width (HP)	Packs of	Model No. RP
42	1	3687.600
63	1	3687.601
84	1	3687.602
858.5 mm	1	3687.603

Custom lengths available upon request.

! Also required:

Assembly screws M4 x 12, packs of 100, Model No. RP 3654.300.

Horizontal rails



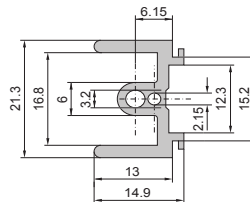
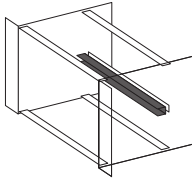
Rear horizontal rail, centre (E)

When subdividing 6U into 2 x 3U, the adaptor rail accommodates the guide rails when fastened to the centre horizontal rail.

- HP pitch pattern of holes for the precise installation of guide rails
- M4 and M2.5 thread on the end face
- Straight-through core hole
- Horizontal rail 192 HP without machining on the end faces. Suitable for cutting to length

Material:
Extruded aluminium section

Surface finish:
Clear-chromated or anodised



Usable width (HP)	Packs of	Model No. RP
12	1	3684.587
16	1	3684.588
20	1	3684.589
40	1	3684.964
42	1	3684.590
63	1	3686.005
84	1	3684.591
84	1	3685.272 ¹⁾
858.5 mm	1	3684.584
192	1	3688.004 ²⁾

¹⁾ Including 2 assembly screws

²⁾ Anodised

Custom lengths available upon request.

! Also required:

Assembly screws M4 x 12,
packs of 100, Model No. RP 3654.300.

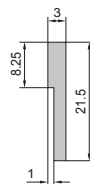


Z rail for connector IEC 60 603-2 (F)

With 84 x M2.5 threaded holes.

Material:
Extruded aluminium section

Surface finish:
Clear-chromated



Usable width (HP)	Packs of	Model No. RP
4	1	3684.597
8	1	3684.598
20	1	3684.599
40	1	3684.965
42	1	3684.600
63	1	3684.601
84	1	3684.602
84	2	3685.271

Custom lengths available upon request.

! Also required:

Assembly screws M2.5 x 6,
packs of 100, Model No. RP 3654.340.