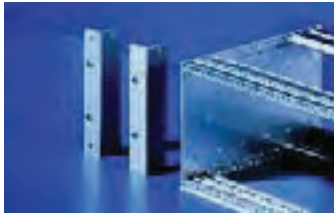


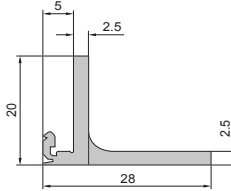
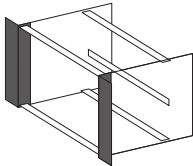
Side panels and flanges



Flange 482.6 mm (19") flange

To fit all Ripac Vario, Ripac Vario EMC, Ripac Compact and Ripac Vario Mobil subracks. With integral channel to accommodate EMC gaskets.

Material:
Extruded aluminium section
Surface finish:
Clear-chromated



U	Packs of	Model No. RP	
		with handle holes	without handle holes
2	1	–	3684.614
3	1	3684.622	3684.615
4	1	3684.623	3684.616
6	1	3684.624	3684.617
7	1	3684.625	3684.618
9	1	–	3684.619
10	1	–	3684.620
11	1	–	3684.621

Custom versions available upon request.

Accessories:

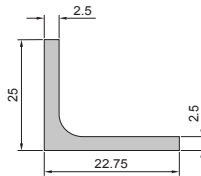
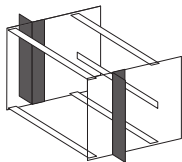
EMC gaskets, vertical,
Handles for subracks.



Flange 482.6 mm (19") flange

Recessed
To fit all Ripac Vario, Ripac Vario EMC and Ripac Vario Mobil subracks.

Material:
Extruded aluminium section
Surface finish:
Clear-chromated



U	Packs of	Model No.	RP
3	1	3684.62	6
4	1	3684.62	7
6	1	3684.62	8
7	1	3684.62	9
9	1	3684.63	0
10	1	3684.63	1
11	1	3684.63	2

Custom versions available upon request.

Also required:

Assembly screws, nuts and washers.
Packs of 4 sets, Model No. RP 3687.015.

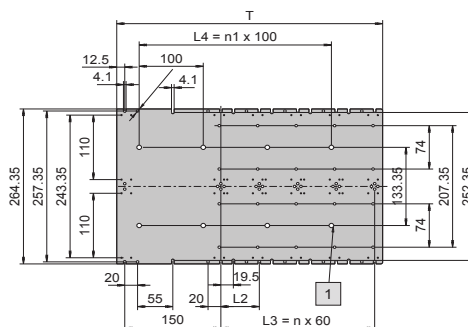
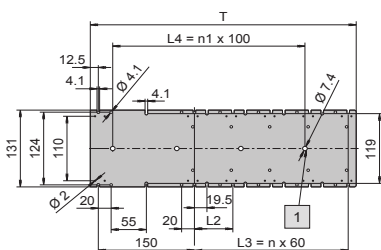


Side Panels for Ripac EASY

- Mounting holes spaced 60 mm apart as slots
- Holes for telescopic slide mounting

Material:
1.5 mm aluminium, corrosion-resistant

D mm	L2	n	n1	Packs of	Max. PCB depth mm	Model No. RP	
						3U	6U
175	–	–	–	2	160	3634.695	3634.720
235	60	–	–	2	220	3634.700	3634.725
295	60	2	2	2	280	3634.705	3634.730
355	60	3	3	2	340	3634.710	3634.735
415	60	4	3	2	400	3634.715	3634.740



Custom versions available upon request.

Accessories:

Flange for Ripac EASY.

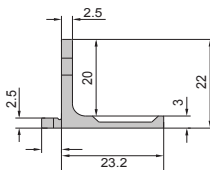
Side panels and flanges



Flange
482.6 mm(19")
for Ripac EASY
Integral holes for mounting handles.

Material:
Extruded aluminium section

Surface finish:
Anodised



U	Packs of	Model No. RP
3	2	3634.745
6	2	3634.750

Custom versions available upon request.

Accessories:

Handles for subracks.



Handles

To fit all subracks and component shelves
For fitting on the subrack flange with handle holes
and on all component shelves.

Material:
Die-cast zinc

Surface finish:
Spray-finished, silver-grey

Supply includes:
Assembly parts.

U	Packs of	Model No. RP
Subracks 3U and 4U	2	3636.010
Component shelves		
Subracks 6U and 7U	2	3666.010

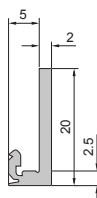
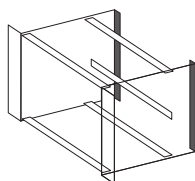


Trim section, rear

To fit all Ripac Vario, Ripac Vario EMC,
Ripac Compact and Ripac Vario Mobil subracks.
Ensures 84 HP fit at the rear of the subrack.
With integral channel to accommodate
EMC gaskets.

Material:
Extruded aluminium section

Surface finish:
Clear-chromated



U	Model No. RP	
	Packs of 1	Packs of 2
2	3684.633	–
3	3684.634	3685.276
4	3684.635	–
6	3684.636	3685.277
7	3684.637	–
9	3684.638	–
10	3684.639	–
11	3684.640	–

Custom versions available upon request.

Accessories:

EMC gaskets, vertical.