

Individual Subrack Components

Horizontal Rails

Rear Horizontal Rail With Integral Z Rail (C3)

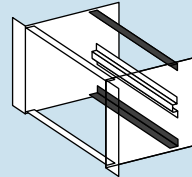
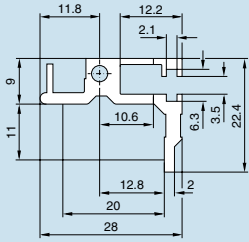


For accommodation of guide rails. Integral Z rail for mounting of DIN 41 612 connectors.

- HP pitch pattern of holes for exact mounting of guide rails
- 84 threaded holes M2.5 for fitting DIN 41 612 connectors
- M4 thread at ends
- Straight-through core hole

Material:
Extruded aluminum

Surface Finish:
Clear chromated



Usable width (HP)	Packs of	Order No.
42	1	3686191
63	1	3686919
84	1	3686159

Note: Order assembly screws separately.

	Packs of	Order No.
M4 x 12	100	3654300

Rear Horizontal Rail, Center (D1)

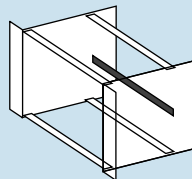
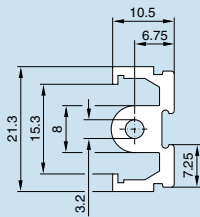


When using 6 U PCBs or modules. Mounting facility for Z rails, insulating or contact strips and backplanes.

- 84 threaded holes M2.5
- M4 thread at ends
- Straight-through core hole
- Horizontal rail 192HP for cutting to length

Material:
Extruded aluminum

Surface Finish:
Clear chromated
²Flash anodized



Usable width (HP)	Packs of	Order No.
40	1	3684963
42	1	3684580
63	1	3684581
84	1	3684582
84	1	3685270 ¹⁾
192	1	3688003 ²⁾

¹⁾including 2 assembly screws

Note: Order assembly screws separately.

	Packs of	Order No.
M4 x 12	100	3654300

Rear Adapter Rail, Center (E)

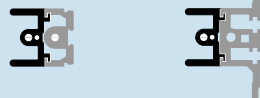
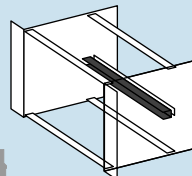
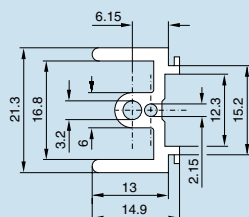


When dividing 6U into 2 x 3U, the adapter rail fastened to the center horizontal rail accommodates the guide rails.

- HP pitch pattern of holes for precise installation of guide rails
- M4 and M2.5 thread at ends
- Straight-through core hole
- Horizontal rail 192HP for cutting to length

Material:
Extruded aluminum

Surface Finish:
Clear chromated
²⁾Flash anodized



Usable width (HP)	Packs of	Order No.
4	1	3684585
8	1	3684586
12	1	3684587
16	1	3684588
20	1	3684589
40	1	3684964
42	1	3684590
63	1	3686005
84	1	3684591
84	1	3685272 ¹⁾
192	1	3688004 ²⁾

¹⁾including 2 assembly screws

Note: Order assembly screws separately.

	Packs of	Order No.
M4 x 12	100	3654300