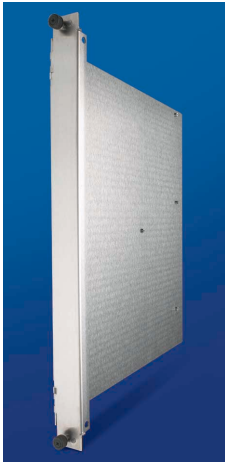


AdvancedTCA® Face Plates For Front Boards And RTMs



Face Plate With Side 2 Cover – Front



Face Plate With Side 2 Cover – RTM



Face Plate Without Side 2 Cover – Front/RTM



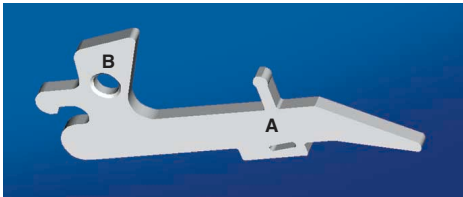
Filler Panel – Front with air management



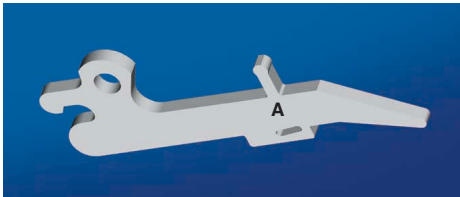
Filler Panel – RTM with air management



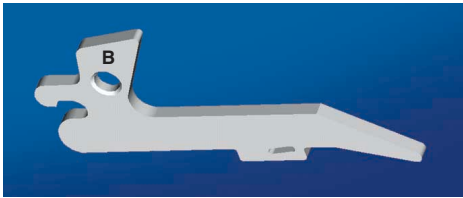
Filler Panel – Front/RTM without air management



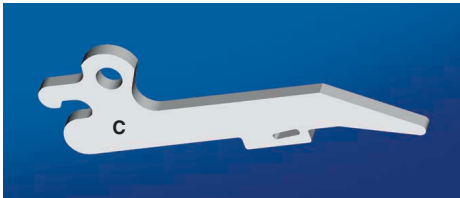
Handle Type 1 – Handle w/microswitch A+B actuator



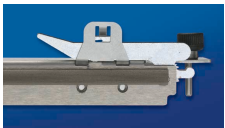
Handle Type 2 – Handle w/microswitch A actuator



Handle Type 1 – Handle w/microswitch B actuator



Handle Type 2 – Handle wo/microswitch actuator



9805172 – Face plate w/optional handle and EMI gasket



3688266 – Filler panel w/optional EMI gasket

Kaparel/Rittal offers a complete range of the AdvancedTCA face plates, filler panels and handles in brushed stainless steel.

A complete custom face plate and filler panel program is available providing custom cut-outs, silk screen or overlays and several handle styles including locking and microswitch activation designs. The face plates and filler panels are also available with optional EMC gaskets – adhesive foam, adhesive finger stock or mechanical snap-in styles. The handle locking device acts as a grounding feature and securely locks the handle under seismic Zone 4 conditions (NEBS Level 3).

The Kaparel/Rittal AdvancedTCA optional face plate and filler panel design are to be used for both the Front Board and RTM assembled in mirror image.

For the front board, the mandatory Component Side 2 cover is incorporated into the face plate design. A front slot or RTM air management version is available for Zone 3.

- Each Face Plate comes with 2 locking latches attached
- Injector/extractor handles, HDW and EMI gaskets must be purchased separately
- Face Plates provide for the I/O interface
- Filler plates are used in place of unused/reserved slots and provide for EMI protection and air-flow management
- The AdvancedTCA Face Plate of 6HP is defined in PICMG 3.0
- I/O devices requiring a return path to shelf ground shall implement this return path through the Face Plate alignment/GND pin/receptacle

Handle Type 1

Microswitch A+B (B position for max I/O)

Type	Qty	Order No.	Material	Finish
A+B	1	9805161	Steel	Zinc plated
B	1	9808691	Steel	Zinc plated

Handle Type 2

Microswitch A position for 4xPMC, when PMC is mounted to the most outside position of the host

Type	Qty	Order No.	Material	Finish
A	1	9808692	Steel	Zinc plated
C	1	9808693	Steel	Zinc plated

Face Plate With Side 2 Cover – Front (mandatory)

HP	Qty	Order No.	Material
6	1	9805174	Stainless
12	1	Inquire	Stainless

Face Plate With Side 2 Cover – RTM (mandatory)

HP	Qty	Order No.	Material
6	1	9808764	Stainless
12	1	Inquire	Stainless

Face Plate Without Side 2 Cover – Front/RTM (optional)

HP	Qty	Order No.	Material
6	1	9805172	Stainless
12	1	Inquire	Stainless

Filler Panel With Airflow Baffle – Front (mandatory)

Type	HP	Qty	Order No.	Material
Front	6	1	3688267	Stainless

Filler Panel With Airflow Baffle – Rear (mandatory)

Type	HP	Qty	Order No.	Material
Rear	6	1	3688268	Stainless

Filler Panel Without Airflow Baffle – Front/RTM (optional)

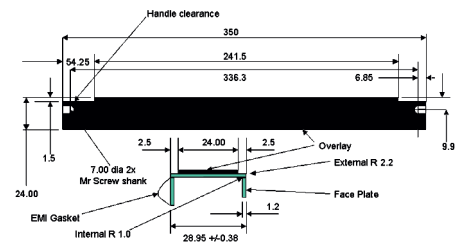
Type	HP	Qty	Order No.	Material
Front	6	1	3688266	Stainless
Rear	6	1	3688266	Stainless

EMI Gaskets For Face Plate And Filler Panels

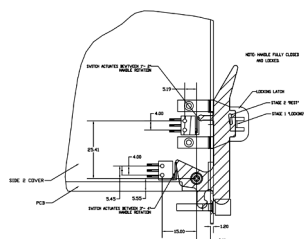
Type	U	Qty	Order No.	Material
F	8	1	9805160	Foam
S	8	1	3688342	Stainless
C	8	1	3654346	Stainless

Hardware

Type	Used for	Qty	Order No.	Head
M2.5 X 6	PCB mtg.	100	3688397	Phillips
M3 X 10	Backplane	100	3688386	Phillips



Face Plate Overlay



Handle/Locking/Microswitch