

Face plates



AdvancedMC face plate kits

These are used as face plates for AMC cards and ATCA carriers, or as filler panels in MicroTCA systems.

- Installation in μ TCA systems or AMC carriers
- Conforms to AMC.0 R2.0
- Height: Single & Double
- Widths: Compact, Mid-Size, Full-Size
- Simple handling when locking and unlocking (no screws)
- Hot swap-compatible injector/extractor handles
- Customer-specific face plates available with a short lead time
- Upgradable with filler sheets and air baffle plates
- Double to Single conversion module (accessory)

Material:

Face plate made from aluminium, bare (stainless steel available on request)
 Holder for light pipe and PCB, die-cast Zn
 Light pipe, polycarbonate
 Handle, die-cast Zn, spray-finished
 EMC seal, foam with metal fabric (UL 94 V0)

Supply includes:

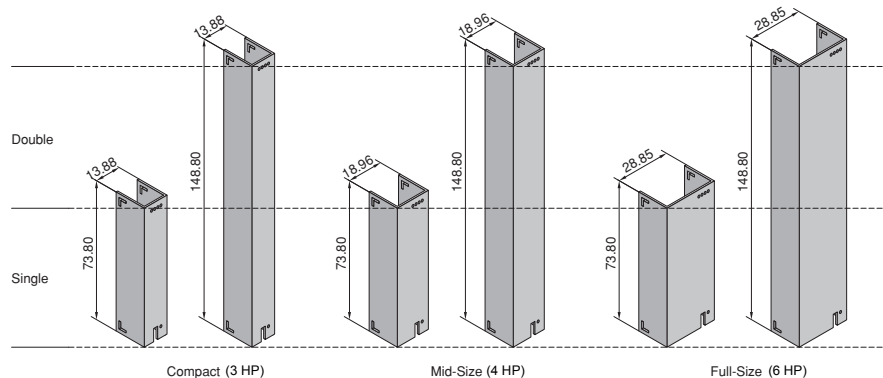
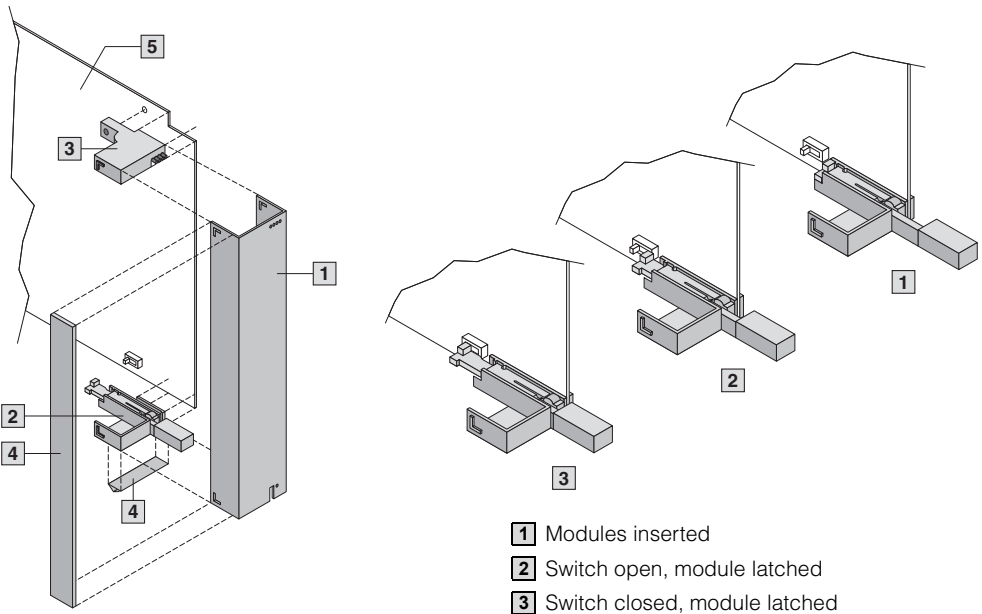
- 1 U-channel face plate,
- 1 holder to accommodate a light pipe and PCB,
- 1 handle for microswitch,
- 1 light pipe (for 2 LEDs),
- 1 EMC gasket, left side and bottom.

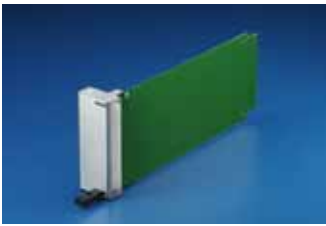
Design (H x W)	Packs of	Model No. RP
Single x Compact	1	9911.885
Single x Mid-Size	1	9911.889
Single x Full-Size	1	9911.886
Double x Compact	1	9911.887
Double x Mid-Size	1	9911.890
Double x Full-Size	1	9911.888

Face plates with 4 LEDs in aluminium and stainless steel available on request (to AMC.0 Spec. R1.0).

+ Accessories:

AMC filler sheets, air baffle plates, conversion module, see page 495.





AMC filler sheets

Filler sheets are mounted on the AMC face plates and are used to route the airflow in ATCA carriers and MicroTCA systems. They may additionally be equipped with air baffle plates to create suitable air resistance in an empty slot.

Material:
FR4



Design	Packs of	Model No. RP
Single	1	9911.570
Double	1	9911.571



Air baffle plates

AMC slots must be populated with an empty card in order to ensure adequate air resistance. The air resistance should be adapted to the requirements of the overall system by the user. In all cases, it should be sufficiently high to ensure that the air is forced to flow over active cards into adjacent slots and does not flow unhindered through empty slots. The air baffle plate is used to adjust the air resistance. Up to 2 air baffle plates may be mounted on one filler sheet. Adjustable air resistance from 80 – 50 % thanks to removable membranes.

Material:
Stainless steel

Supply includes:
1 baffle plate, assembly parts



Design	Packs of	Model No. RP
Compact	1	9911.891
Mid-Size	1	9911.892
Full-Size	1	9911.893



Conversion module

The conversion module allows 1 x Double to be converted into 1 x Single slot. Option of installing Compact or Full-Size modules.

Material:
Stainless steel, partially spray-finished

Supply includes:
1 conversion module



Design	Packs of	Model No. RP
Compact	1	9907.699
Full-Size	1	9911.220