

Order Information

Ripac Rack-Mount System For CompactPCI 9U, 14 Slot With RiCool Hot-Swap Blowers, With RTMs

For 450W systems. Limited cooling redundancy
up to 400W, with air intake filter

U			Order No.	
Side panel depth (mm)	Rear internal wiring space (mm)	For PCB	9 (6 + 1 + 2) For cPCI	
312	85.5	6U x 160 mm 60 x 80 RTMs	3687302	
Mechanical Supply Includes				
Item	Description	Material	Quantity	Page
1	Ripac subrack system	Aluminum, clear chromated	1	146
2	EMC gaskets	Stainless steel	Various	100
3	Covers	1 mm aluminum, clear chromated	2	188-191
4	Guide rails gray/yellow, keyable	Polycarbonate UL 94-V0	26	57
5	Guide rails red (CPU), keyable	Polycarbonate	2	57
6	Guide rails, green (PSU), keyable	Polycarbonate	4	57
7	Guide rails, gray/yellow, (RTMs), keyable	Polycarbonate	28	57
8	ESD clips for PCB ESD wipe	Stainless steel	28	57
9	Front panel hinged for RiCool access	2.5 mm aluminum, clear chromated	1	
10	Front panel for air intake/filter access with on/off switch and status LEDs	1 mm aluminum, clear chromated	1	
11	Air filter, front removable	Quadrafoam UL 94	1	
12	Rear panel with IEC AC connector	2.5 mm aluminum, clear chromated	1	
Electrical Supply Includes				
		Electrical specifications		
13	CompactPCI backplane 6.5U x 8 slot	See PICMG 2.0/2.1	1	73
14	Power supply backplane for 2 x 8HP PSU	See PICMG 2.11	1	87
15	RiCool blowers 12 V or 24 V or 48 V	48 W, 110 cfm each static pressure 1.6" H ₂ O	2	222
16	IEC AC socket with line filter	6A (VDE, UL, CSA)	1	123
17	Power supply 6U x 8HP AC or DC	350W	1	91
18	LED display module with on/off switch	+3.3 V, +5 V, +/-12 V fan failure	1	122
19	AC cable harness		1	
*	DC available upon request			



Ripac Rack-Mounted System For CompactPCI 9U (6 + 1 x 1.5), 8 slots, with RiCool radial fan.

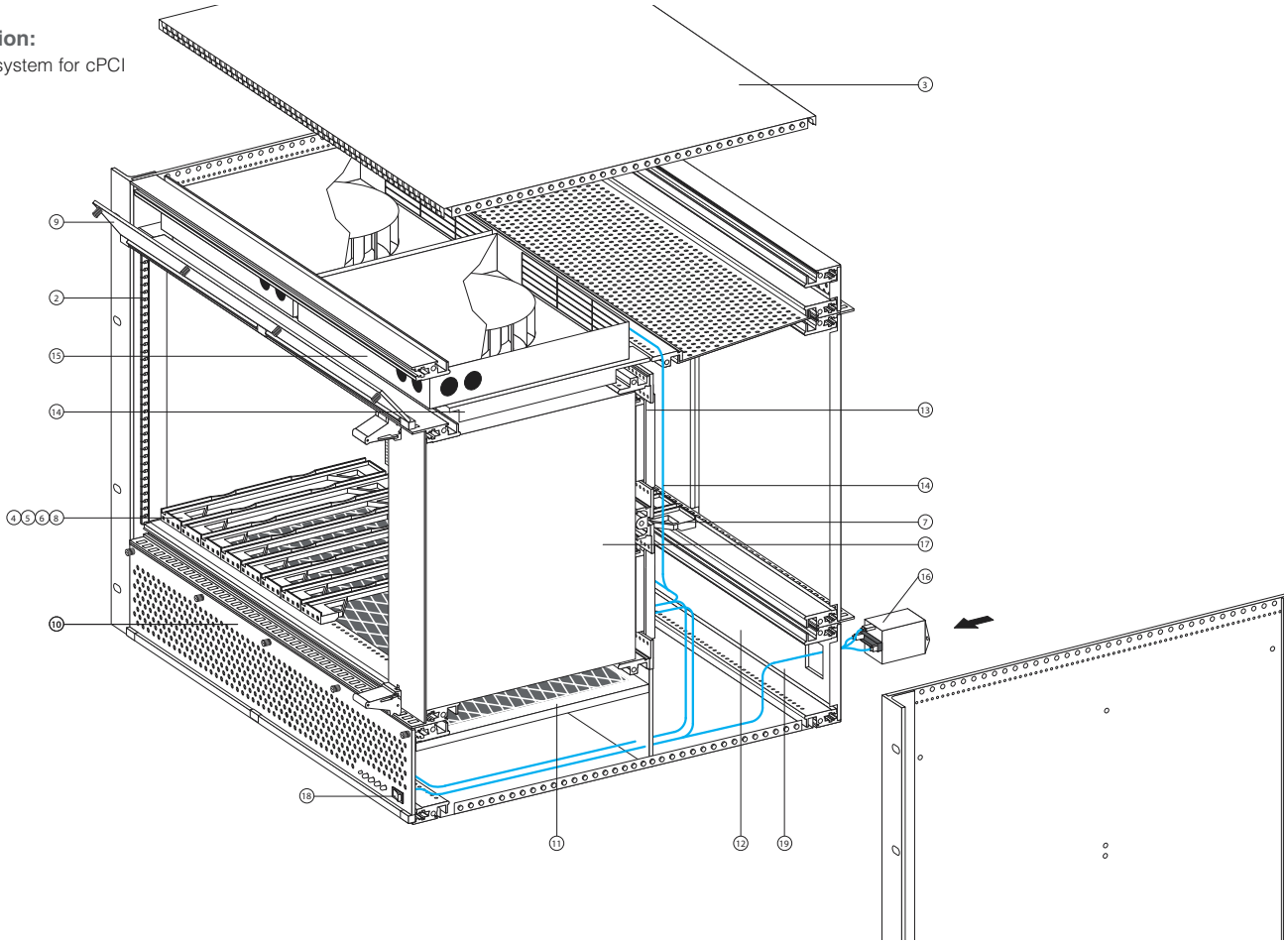
A 9U x 84HP integrated subrack that accepts up to fourteen 6U, 64 or 32-bit CompactPCI boards and up to two double-wide (8HP) 6U-power supplies to form a complete CompactPCI system.

A NEBS compatible subrack for use in telecommunication or telephony applications. It is designed for applications requiring very high airflow in a fail-safe environment with 80 mm transition boards.

I/O transition module at the rear.

Ripac Rack-Mount System For CompactPCI 9U, 14 Slot With RiCool Blower, With RTMs

Illustration:
9U MPS system for cPCI



Technical Description:

Vented system, 291 mm deep, for installation in 19" (486.2 mm) racks, cabinets or cases
 Prepared to accommodate CompactPCI boards and drives
 Complies with IEC 60297-3/-4/-5-1xx; IEEE 1101.1/.10/.11

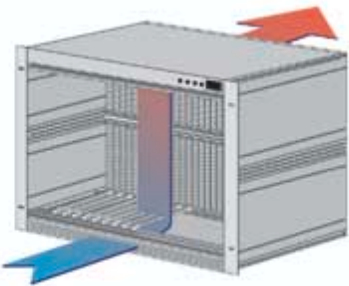
Options To Be Considered:

- For alternative cPCI backplanes, see pages 73-78
- For bridges, see page 83
- For alternative cPCI/H.110 backplanes, see pages 74-75
- For alternative PICMG 2.16 fabric backplanes, see page 78
- For alternative PICMG 2.17 Star Fabric™ backplanes, see page 76

- For alternative PSU backplanes, see pages 88-91
- For power supplies, see page 91
- For DC power entry module, see page 92
- For alarm card, see pages 93-94
- For hard disk drive modules, see page 95
- For RiCool blowers, see pages 222-225

- For system thermal evaluation tools, see page 54
- For EMC filler panels, see pages 208-209
- For front panels and injector/extractor handles, see page 98
- For 30A RTM ground contacts, see page 58

Features	9U
Prepared for the installation of 14U x 6U x 160 mm cPCI front boards and 14U x 6U x 80 mm RTMs	•
For the optional installation of drives and pluggable PSUs	•
6U x 8HP AC or DC power supplies, 2 x 350W included	•
Front/rear interface for CompactPCI defined injector/extractor handles	•
Keyable PCB guide/slot positions per PICMG 2.10	•
Red guides for the system slot	•
Green guides for the PSU slot	•
Gray/yellow guides for peripheral slot identification	•
ESD clips for PCB ESD wipe	•
Optional ESD clips for front panel ESD protection	•
Optional 30A GND sockets for RTM protection	•
Front to rear cooling	•
EMC design	•
Forced air cooling with intelligent, hot-swap RiCool blowers	•
Fully wired and tested	•



Modification Service:
 Modifications or custom solutions are available. The Kaparel/Rittal system specialists will assist you with planning and configuration.