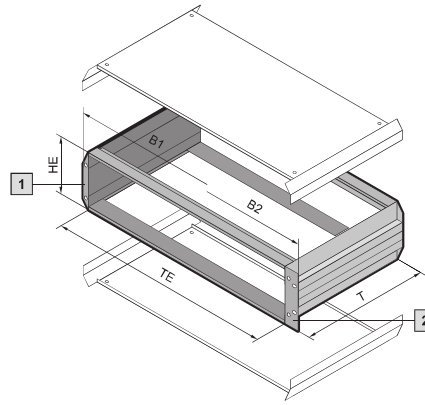


Ripac Vario-Module 2U



HE = U
TE = HP

Technical specifications:
May be used as a rack-mounted enclosure or instrument case. External dimensions to IEC 60 297-1 for installation in 482.6 mm (19") racks. Installation dimensions for board type plug-in assemblies to IEC 60 297-3-101.

Material/Surface finish:
Side panels:
Extruded aluminium section, spray-finished in RAL 7035
Horizontal rails:
Extruded aluminium section, clear-chromated
Corner trims:
Die-cast zinc, spray-finished in RAL 7035
Side trims:
Extruded aluminium section, spray-finished in RAL 7035

Protection category:
IP 40 for non-vented version.

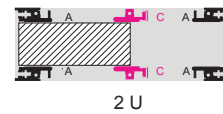
Supply includes:
2 side panels,
4 horizontal rails,
4 threaded inserts,
2 corner trims,
assembly parts.

- 1 Equipped as an instrument case
- 2 Equipped as a rack-mounted unit

Note:
Corner trims, mounting flanges and top and bottom covers must be ordered separately.

Horizontal rails for further configuration must be ordered separately,

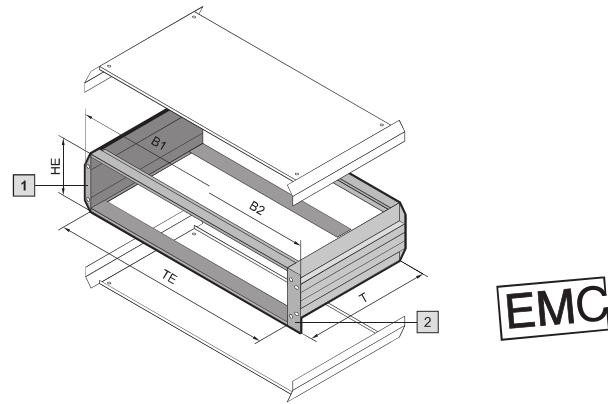
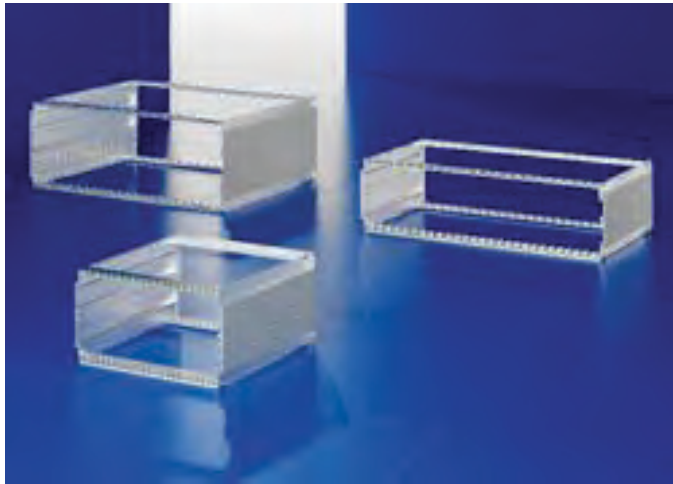
Horizontal rail configuration



2 U
 Custom variations available upon request.

Ripac Vario-Module	Packs of	2U						Page
Installation width (HP)		42	42	63	63	84	84	
Width (B1) mm		235.6	235.6	342.3	342.3	449.0	449.0	
Width (B2) mm		251.6	251.6	358.3	358.3	465.1	465.1	
Depth (T) mm		250.4	310.4	250.4	310.4	250.4	310.4	
Model No. VM Basic enclosure	1	3982.000	3982.020	3982.290	3982.300	3982.010	3982.030	
Also required								
Top covers								
– with vent holes	1	3982.941	3982.951	3982.942	3982.952	3982.940	3982.950	
– without vent holes	1	3982.901	3982.911	3982.902	3982.912	3982.900	3982.910	
Bottom covers								
– with vent holes	1	3982.741	3982.751	3982.742	3982.752	3982.740	3982.750	
– without vent holes	1	3982.701	3982.711	3982.702	3982.712	3982.700	3982.710	
Front corner trims for assembly as instrument case	2	3981.300	3981.300	3981.300	3981.300	3981.300	3981.300	
Flanges for configuration as rack-mount								
– without handle holes	2	3981.200	3981.200	3981.200	3981.200	3981.200	3981.200	
Accessories								
Front/rear panels								
Rear adjustable feet	4	3901.000	3901.000	3901.000	3901.000	3901.000	3901.000	

Ripac Vario-Module 2U, EMC



HE = U
TE = HP

Technical specifications:
May be used as a rack-mounted enclosure or instrument case.
External dimensions to IEC 60 297-1 for installation in 482.6 mm (19") racks.
Installation dimensions for board type plug-in assemblies to IEC 60 297-3-101.

Material/Surface finish:
Side panels:
Extruded aluminium section, spray-finished in RAL 7035
Horizontal rails:
Extruded aluminium section, clear-chromated
Corner trims:
Die-cast zinc, spray-finished in RAL 7035

Side trims:
Extruded aluminium section, spray-finished in RAL 7035
Contact points: conductive

Protection category:
IP 40 for non-vented version.

Supply includes:
2 side panels,
4 horizontal rails,
4 threaded inserts,
2 rear corner trims,
assembly parts.

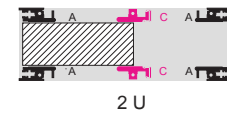
1 Equipped as an instrument case

2 Equipped as a rack-mounted unit

Note:
Corner trims, mounting flanges and top and bottom covers must be ordered separately.

Horizontal rails for further configuration must be ordered separately,

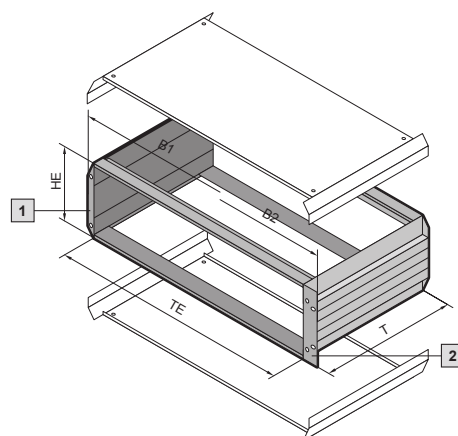
Horizontal rail configuration



Custom variations available upon request.

Ripac Vario-Module	Packs of	2U						Page
Installation width (HP)		42	42	63	63	84	84	
Width (B1) mm		235.6	235.6	342.3	342.3	449.0	449.0	
Width (B2) mm		251.6	251.6	358.3	358.3	465.1	465.1	
Depth (T) mm		250.4	310.4	250.4	310.4	250.4	310.4	
Model No. VM Basic enclosure EMC	1	3983.000	3983.020	3983.290	3983.300	3983.010	3983.030	
Also required								
EMC top covers								
– with vent holes	1	3981.941	3981.951	3981.942	3981.952	3981.940	3981.950	
– without vent holes	1	3981.901	3981.911	3981.902	3981.912	3981.900	3981.910	
EMC bottom covers								
– with vent holes	1	3981.741	3981.751	3981.742	3981.752	3981.740	3981.750	
– without vent holes	1	3981.701	3981.711	3981.702	3981.712	3981.700	3981.710	
Front corner trims for assembly as instrument case	2	3981.300	3981.300	3981.300	3981.300	3981.300	3981.300	
Flanges for configuration as rack-mount – without handle holes	2	3981.200	3981.200	3981.200	3981.200	3981.200	3981.200	
EMC installation								
EMC gaskets, horizontal								
– for upper/lower horizontal rail	1	3684.808	3684.808	3684.808	3684.808	3684.808	3684.808	
– between covers and horizontal rails	1	3684.245	3684.245	3684.245	3684.245	3684.245	3684.245	
EMC gaskets, vertical	1	3686.974	3686.974	3686.974	3686.974	3686.974	3686.974	
Front/rear panels EMC								
Accessories								
Front/rear panels								
Rear adjustable feet	4	3901.000	3901.000	3901.000	3901.000	3901.000	3901.000	

Ripac Vario-Module 3U



HE = U
TE = HP

Technical specifications:
May be used as a rack-mounted enclosure or instrument case.
External dimensions to IEC 60 297-1 for installation in 482.6 mm (19") racks.
Installation dimensions for board type plug-in assemblies to IEC 60 297-3-101.

Material/Surface finish:
Side panels:
Extruded aluminium section, spray-finished in RAL 7035
Horizontal rails:
Extruded aluminium section, clear-chromated
Corner trims:
Die-cast zinc, spray-finished in RAL 7035
Side trims:
Extruded aluminium section, spray-finished in RAL 7035

Protection category:
IP 40 for non-vented version.

Supply includes:
2 side panels,
4 horizontal rails,
4 threaded inserts,
2 corner trims,
assembly parts.

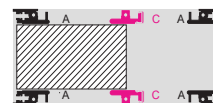
1 Equipped as an instrument case

2 Equipped as a rack-mounted unit

Note:
Corner trims, mounting flanges and top and bottom covers must be ordered separately.

Horizontal rails for further configuration must be ordered separately,

Horizontal rail configuration



3U

Custom variations available upon request.

Ripac Vario-Module	Packs of	3U							Page
Installation width (HP)		42	42	63	63	84	84	84	
Width (B1) mm		235.6	235.6	342.3	342.3	449.0	449.0	449.0	
Width (B2) mm		251.6	251.6	358.3	358.3	465.1	465.1	465.1	
Depth (T) mm		250.4	310.4	250.4	310.4	250.4	310.4	370.4	
Model No. VM Basic enclosure	1	3982.040	3982.070	3982.050	3982.080	3982.060	3982.090	3982.100	

Also required

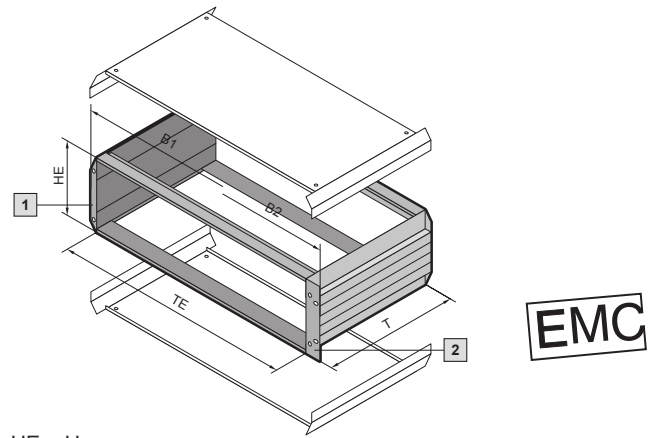
Top covers									
- with vent holes	1	3982.941	3982.951	3982.942	3982.952	3982.940	3982.950	3982.960	
- without vent holes	1	3982.901	3982.911	3982.902	3982.912	3982.900	3982.910	3982.920	
Bottom covers									
- with vent holes	1	3982.741	3982.751	3982.742	3982.752	3982.740	3982.750	3982.760	
- without vent holes	1	3982.701	3982.711	3982.702	3982.712	3982.700	3982.710	3982.720	
Front corner trims for assembly as instrument case	2	3981.310	3981.310	3981.310	3981.310	3981.310	3981.310	3981.310	
Flanges for configuration as rack-mount									
- without handle holes	2	3981.210	3981.210	3981.210	3981.210	3981.210	3981.210	3981.210	
- with handle holes	2	3981.260	3981.260	3981.260	3981.260	3981.260	3981.260	3981.260	

Accessories

Front/rear panels									
Carrying handles	2	3981.350	3981.360	3981.350	3981.360	3981.350	3981.360	3981.370	
Front handles ¹⁾	2	3636.010	3636.010	3636.010	3636.010	3636.010	3636.010	3636.010	
Acrylic front door	1	3981.420	3981.420	3981.430	3981.430	3981.440	3981.440	3981.440	
Rear adjustable feet	4	3901.000	3901.000	3901.000	3901.000	3901.000	3901.000	3901.000	

¹⁾ Only in conjunction with mounting flanges with handle holes.

Ripac Vario-Module 3U, EMC



HE = U

Technical specifications:
May be used as a rack-mounted enclosure or instrument case.
External dimensions to IEC 60 297-1 for installation in 482.6 mm (19") racks.
Installation dimensions for board type plug-in assemblies to IEC 60 297-3-101.

Material/Surface finish:
Side panels:
Extruded aluminium section, spray-finished in RAL 7035
Horizontal rails:
Extruded aluminium section, clear-chromated
Corner trims:
Die-cast zinc, spray-finished in RAL 7035

Side trims:
Extruded aluminium section, spray-finished in RAL 7035
Contact points: conductive

Protection category:
IP 40 for non-vented version.

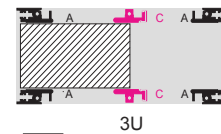
Supply includes:
2 side panels,
4 horizontal rails,
4 threaded inserts,
2 rear corner trims, assembly parts.

- 1 Equipped as an instrument case
- 2 Equipped as a rack-mounted unit

Note:
Corner trims, mounting flanges and top and bottom covers must be ordered separately.

Horizontal rails for further configuration must be ordered separately,

Horizontal rail configuration



Custom variations available upon request.

Ripac Vario-Module	Packs of	3U							Page
Installation width (HP)		42	42	63	63	84	84	84	
Width (B1) mm		235.6	235.6	342.3	342.3	449.0	449.0	449.0	
Width (B2) mm		251.6	251.6	358.3	358.3	465.1	465.1	465.1	
Depth (T) mm		250.4	310.4	250.4	310.4	250.4	310.4	370.4	
Model No. VM Basic enclosure EMC	1	3983.040	3983.070	3983.050	3983.080	3983.060	3983.090	3983.100	

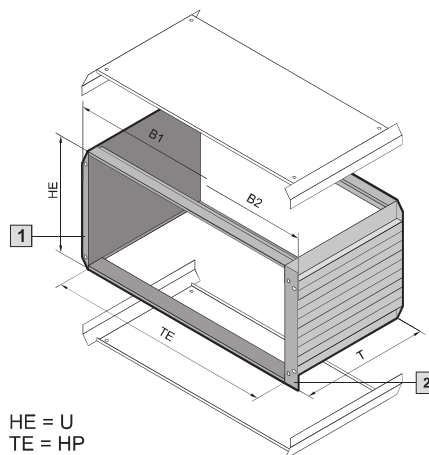
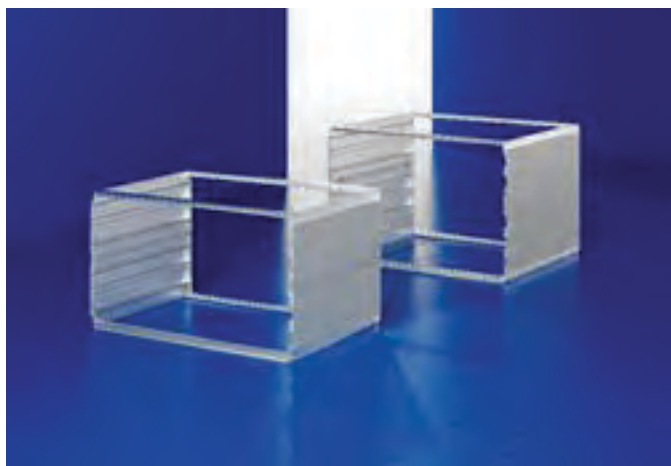
Also required									
EMC top covers									
- with vent holes	1	3981.941	3981.951	3981.942	3981.952	3981.940	3981.950	3981.960	
- without vent holes	1	3981.901	3981.911	3981.902	3981.912	3981.900	3981.910	3981.920	
EMC bottom covers									
- with vent holes	1	3981.741	3981.751	3981.742	3981.752	3981.740	3981.750	3981.760	
- without vent holes	1	3981.701	3981.711	3981.702	3981.712	3981.700	3981.710	3981.720	
Front corner trims for assembly as instrument case	2	3981.310	3981.310	3981.310	3981.310	3981.310	3981.310	3981.310	
Flanges for configuration as rack-mount									
- without handle holes	2	3981.210	3981.210	3981.210	3981.210	3981.210	3981.210	3981.210	
- with handle holes	2	3981.260	3981.260	3981.260	3981.260	3981.260	3981.260	3981.260	

EMC installation									
EMC gaskets, horizontal									
- for upper/lower horizontal rail	1	3684.808	3684.808	3684.808	3684.808	3684.808	3684.808	3684.808	
- between covers and horizontal rails	10	3684.245	3684.245	3684.245	3684.245	3684.245	3684.245	3684.245	
EMC gaskets, vertical	1	3686.975	3686.975	3686.975	3686.975	3686.975	3686.975	3686.975	
Front/rear panels EMC									

Accessories									
Front/rear panels									
Carrying handles	2	3981.350	3981.360	3981.350	3981.360	3981.350	3981.360	3981.370	
Front handles ¹⁾	2	3636.010	3636.010	3636.010	3636.010	3636.010	3636.010	3636.010	
Acrylic front door	1	3981.420	3981.420	3981.430	3981.430	3981.440	3981.440	3981.440	
Rear adjustable feet	4	3901.000	3901.000	3901.000	3901.000	3901.000	3901.000	3901.000	

¹⁾Only in conjunction with mounting flanges with handle holes.

Ripac Vario-Module 4U, 6U, 7U



Technical specifications:
May be used as a rack-mounted enclosure or instrument case.
External dimensions to IEC 60 297-1 for installation in 482.6 mm (19") racks.
Installation dimensions for board type plug-in assemblies to IEC 60 297-3-101.

Material/surface finish:
Side panels:
Extruded aluminium section, spray-finished in RAL 7035
Horizontal rails:
Extruded aluminium section, clear-chromated
Corner trims:
Die-cast zinc, spray-finished in RAL 7035

Protection category:
IP 40 for non-vented version.

Supply includes:
2 side panels,
4 horizontal rails,
4 threaded inserts,
2 rear corner trims,
2 side trims centre,
assembly parts.

1 Equipped as an instrument case

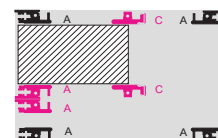
2 Equipped as a rack-mounted unit

Note:
Corner trims, mounting flanges and top and bottom covers must be ordered separately.

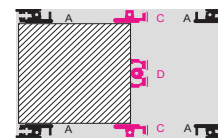
Horizontal rails for further configuration must be ordered separately.

Custom variations available upon request.

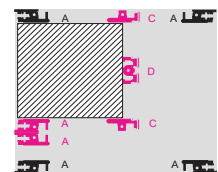
Horizontal rail configuration



4U (3 + 1)



6U

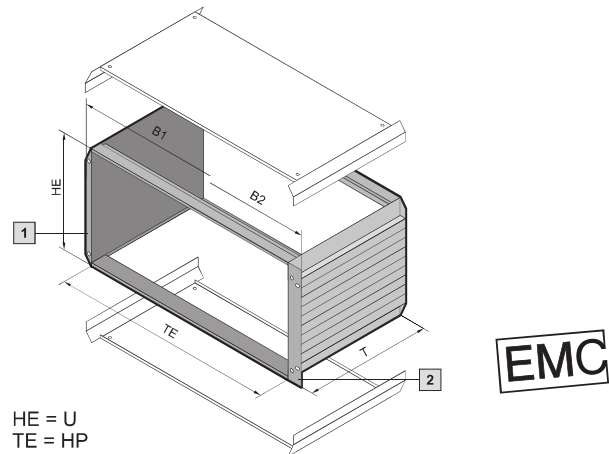


7U (6 + 1)

Ripac Vario-Module	Packs of	4U (3 + 1)			6U			7U (6 + 1)			Page
Installation width (HP)		84	84	84	84	84	84	84	84		
Width (B1) mm		449.0	449.0	449.0	449.0	449.0	449.0	449.0	449.0		
Width (B2) mm		465.1	465.1	465.1	465.1	465.1	465.1	465.1	465.1		
Depth (T) mm		250.4	310.4	370.4	310.4	370.4	430.4	310.4	430.4		
Model No. VM Basic enclosure	1	3982.110	3982.120	3982.130	3982.140	3982.150	3982.160	3982.170	3982.190		
Also required											
Top covers											
– with vent holes	1	3982.940	3982.950	3982.960	3982.950	3982.960	3982.970	3982.950	3982.970		
– without vent holes	1	3982.900	3982.910	3982.920	3982.910	3982.920	3982.930	3982.910	3982.930		
Bottom covers											
– with vent holes	1	3982.740	3982.750	3982.760	3982.750	3982.760	3982.770	3982.750	3982.770		
– without vent holes	1	3982.700	3982.710	3982.720	3982.710	3982.720	3982.730	3982.710	3982.730		
Front corner trims for assembly as instrument case	2	3981.320	3981.320	3981.320	3981.330	3981.330	3981.330	3981.340	3981.340		
Flanges for configuration as rack-mount											
– without handle holes	2	3981.220	3981.220	3981.220	3981.230	3981.230	3981.230	3981.240	3981.240		
– with handle holes	2	3981.270	3981.270	3981.270	3981.280	3981.280	3981.280	3981.290	3981.290		
Accessories											
Front/rear panel		see page 184 – 199									
Carrying handles	2	3981.350	3981.360	3981.370	3981.360	3981.370	3981.380	3981.360	3981.380		
Front handles ¹⁾	2	3636.010	3636.010	3636.010	3666.010	3666.010	3666.010	3666.010	3666.010		
Acrylic front door	1	3981.450	3981.450	3981.450	3981.460	3981.460	3981.460	3981.470	3981.470		
Rear adjustable feet	4	3901.000	3901.000	3901.000	3901.000	3901.000	3901.000	3901.000	3901.000		

¹⁾ Only in conjunction with mounting flanges with handle holes.

Ripac Vario-Module 4U, 6U, 7U, EMC



Technical specifications:
May be used as a rack-mounted enclosure or instrument case. External dimensions to IEC 60 297-1 for installation in 482.6 mm (19") racks. Installation dimensions for board type plug-in assemblies to IEC 60 297-3-101.

Material/surface finish:
Side panels:
Extruded aluminium section, spray-finished in RAL 7035
Horizontal rails:
Extruded aluminium section, clear-chromated
Corner trims:
Die-cast zinc, spray-finished in RAL 7035
Contact points: conductive

Protection category:
IP 40 for non-vented version.

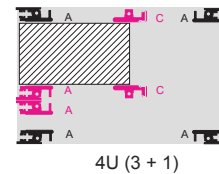
Supply includes:
2 side panels,
4 horizontal rails,
4 threaded inserts,
2 rear corner trims,
2 side trims centre,
assembly parts.

Note:
Corner trims, mounting flanges and top and bottom covers must be ordered separately.

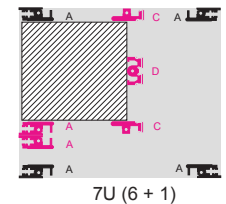
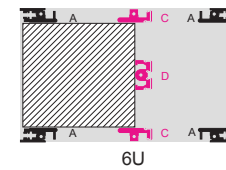
Custom variations available upon request.

- 1 Equipped as an instrument case
- 2 Equipped as a rack-mounted unit

Horizontal rails for further configuration must be ordered separately,



Horizontal rail configuration



Ripac Vario-Module	Packs of	4U (3 + 1)			6U			7U (6 + 1)		Page
Installation width (HP)		84	84	84	84	84	84	84	84	
Width (B1) mm		449.0	449.0	449.0	449.0	449.0	449.0	449.0	449.0	
Width (B2) mm		465.1	465.1	465.1	465.1	465.1	465.1	465.1	465.1	
Depth (T) mm		250.4	310.4	370.4	310.4	370.4	430.4	310.4	430.4	
Model No. VM Basic enclosure EMC	1	3983.110	3983.120	3983.130	3983.140	3983.150	3983.160	3983.170	3983.190	

Also required										
EMC top covers										
– with vent holes	1	3981.940	3981.950	3981.960	3981.950	3981.960	3981.970	3981.950	3981.970	
– without vent holes	1	3981.900	3981.910	3981.920	3981.910	3981.920	3981.930	3981.910	3981.930	
EMC bottom covers										
– with vent holes	1	3981.740	3981.750	3981.760	3981.750	3981.760	3981.770	3981.750	3981.770	
– without vent holes	1	3981.700	3981.710	3981.720	3981.710	3981.720	3981.730	3981.710	3981.730	
Front corner trims for assembly as instrument case	2	3981.320	3981.320	3981.320	3981.330	3981.330	3981.330	3981.340	3981.340	
Flanges for configuration as rack-mount										
– without handle holes	2	3981.220	3981.220	3981.220	3981.230	3981.230	3981.230	3981.240	3981.240	
– with handle holes	2	3981.270	3981.270	3981.270	3981.280	3981.280	3981.280	3981.290	3981.290	

EMC installation										
EMC gaskets, horizontal										
– for upper/lower horizontal rail	1	3684.808	3684.808	3684.808	3684.808	3684.808	3684.808	3684.808	3684.808	
– between covers and horizontal rails	10	3684.245	3684.245	3684.245	3684.245	3684.245	3684.245	3684.245	3684.245	
EMC gaskets, vertical	1	3686.976	3686.976	3686.976	3686.977	3686.977	3686.977	3686.978	3686.978	
Front/rear panels EMC										

Accessories										
Front/rear panel										
Carrying handles	2	3981.350	3981.360	3981.370	3981.360	3981.370	3981.380	3981.360	3981.370	
Front handles ¹⁾	2	3636.010	3636.010	3636.010	3666.010	3666.010	3666.010	3666.010	3666.010	
Acrylic front door	1	3981.450	3981.450	3981.450	3981.460	3981.460	3981.460	3981.470	3981.470	
Rear adjustable feet	4	3901.000	3901.000	3901.000	3901.000	3901.000	3901.000	3901.000	3901.000	

¹⁾ Only in conjunction with mounting flanges with handle holes.

Ripac Vario-Module accessories

Enclosure population

For individual interior installation of the enclosures, system components from the Ripac range may be used.



Top Covers for Ripac Vario module

Standard version
Material:
Sheet steel, spray-finished
Colour:
RAL 7035

EMC version
Material:
Sheet steel, spray-finished
Contact points: conductive

HP	Depth mm	Model No. VM standard		Model No. VM EMC	
		with vent holes	without vent holes	with vent holes	without vent holes
42	250.4	3982.941	3982.901	3981.941	3981.901
	310.4	3982.951	3982.911	3981.951	3981.911
63	250.4	3982.942	3982.902	3981.942	3981.902
	310.4	3982.952	3982.912	3981.952	3981.912
84	250.4	3982.940	3982.900	3981.940	3981.900
	310.4	3982.950	3982.910	3981.950	3981.910
	370.4	3982.960	3982.920	3981.960	3981.920
	430.4	3982.970	3982.930	3981.970	3981.930

Custom variations available upon request.



Bottom Covers for Ripac Vario module

Standard version
Material:
Sheet steel, spray-finished
Colour:
RAL 7035

EMC version
Material:
Sheet steel, spray-finished
Contact points: Conductive

HP	Depth mm	Model No. VM standard		Model No. VM EMC	
		with vent holes	without vent holes	with vent holes	without vent holes
42	250.4	3982.741	3982.701	3981.741	3981.701
	310.4	3982.751	3982.711	3981.751	3981.711
63	250.4	3982.742	3982.702	3981.742	3981.702
	310.4	3982.752	3982.712	3981.752	3981.712
84	250.4	3982.740	3982.700	3981.740	3981.700
	310.4	3982.750	3982.710	3981.750	3981.710
	370.4	3982.760	3982.720	3981.760	3981.720
	430.4	3982.770	3982.730	3981.770	3981.730

Custom variations available upon request.



Feet

with fold-out support stand.
Load capacity up to 20 kg.

Material:
Plastic

Colour:
RAL 7035

Packs of	Model No. VM
2	3919.000



Mounting plate

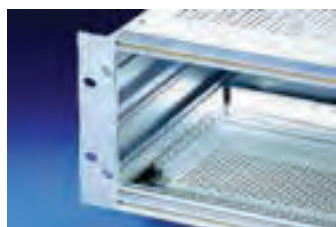
For mounting heavy components.

Material:
Aluminium

Supply includes:
Assembly parts.

HP	Depth mm	Packs of	Model No. VM
42	250	1	3982.370
63	250	1	3982.380
84	250	1	3982.390

Ripac Vario-Module accessories



Front Flanges

Required when the Ripac Vario-Module is to be used as a rack-mounted enclosure. The flanges have a channel to accommodate vertical EMC gaskets.

Material:
Aluminium, clear-chromated

U	Packs of	Model No. VM	
		without handle hole	with handle hole
2	2	3981.200	–
3	2	3981.210	3981.260
4	2	3981.220	3981.270
6	2	3981.230	3981.280
7	2	3981.240	3981.290



Accessories:

Vertical EMC gasket,
Front handles for mounting on front flanges,



Front corner trims

Required when the Ripac Vario-Module is to be used as a desk-top instrument case. The corner trims have a channel to accommodate vertical EMC gaskets.

Material:
Aluminium, spray-finished

Colour:
RAL 7035

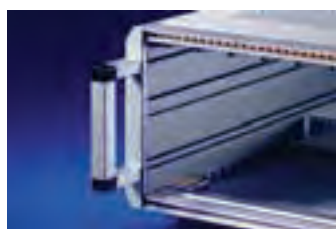
U	Packs of	Model No. VM
2	2	3981.300
3	2	3981.310
4	2	3981.320
6	2	3981.330
7	2	3981.340

1 and 8U available on request.



Accessories:

Vertical EMC gasket,
Front handles for mounting on front corner trim



Front handles

For mounting on front corner trims
Maximum load capacity: 500 N

Material:
Cover: ABS
Handle part: Aluminium, clear anodised

Supply includes:
2 handle parts, 4 covers, assembly parts.

U	Packs of	Model No. VM
3	2	3982.350
4	2	3982.360
6	2	3982.400
7	2	3982.410



Accessories:



Carrying handles

For ergonomic transportation, even with stacked enclosures. May also be used as a support stand. Max. load capacity: 350 N.

Material:
Die-cast zinc and extruded aluminium section

Colour:
RAL 7035

Note:
Only for use with front and rear trims.

For enclosure depth mm	Packs of	Model No. VM
250.4	2	3981.350
310.4	2	3981.360
370.4	2	3981.370
430.4	2	3981.380



Accessories:

Ripac Vario-Module accessories



Front feet

For mounting on the rear of the enclosure.

Dual function:

- Mechanical protection of the connection components.
- Also act as a cable tidy during transportation.

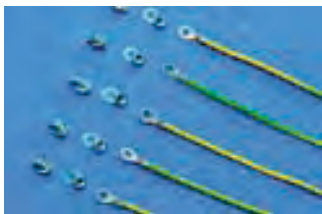
Material:

PA,
self-extinguishing to UL 94-V0

Colour:

RAL 7035

Packs of	Model No. VM
4	3901.000



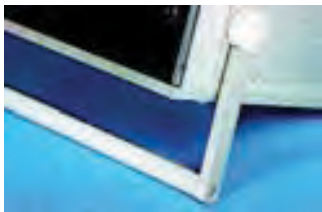
Earthing set

For connecting the top and bottom covers to the side panels with PE conductors.

Supply includes:

Conductor cable green/yellow, 1.5 mm²,
with washer, flat-pin connector and assembly parts.

Packs of	Model No. RP
5	3900.000



Support stand/carrying handle

To fit Ripac Vario-Module 3U, 4U and 6U,
adjustable on a 30° pitch pattern.

Material:

Extruded aluminium section/die-cast

Colour:

RAL 7035

Supply includes:

Assembly parts.

Note:

Corner trim for support stands/carrying handles
should be ordered separately.

For Ripac Vario-Module	Packs of	Model No. VM
42 HP	1	3981.390
63 HP	1	3981.400
84 HP	1	3981.410

Corner trim for support stand	Packs of	Model No. VM
3U	2	3981.310
4U	2	3981.500
6U	2	3981.510



Front doors

of acrylic glazing, horizontally hinged
For protection of built-in control components.

Material:

Side parts: Aluminium, spray-finished in RAL 7035
Window: Smoked acrylic

Supply includes:

Assembly parts.

U	For Ripac Vario-Module	Packs of	Model No. VM
3	42 HP	1	3981.420
3	63 HP	1	3981.430
3	84 HP	1	3981.440
4	84 HP	1	3981.450
6	84 HP	1	3981.460
7	84 HP	1	3981.470



Front panels/rear panels

To cover the enclosures front and rear.
Also available as a hinged or EMC version.

Model No.