

Horizontal Rails

Rear Horizontal Rail (C1)

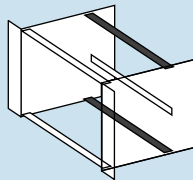
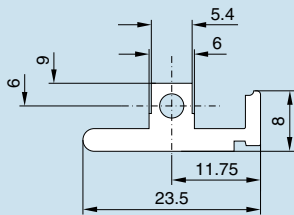


For accommodation of guide rails and securing of Z rails, insulating or contact strips.

- HP pitch pattern of holes for precise installation of guide rails
- M 2.5 for fastening the Z rails, insulating or contact strips and backplanes
- M4 thread at ends
- Straight-through core hole
- Horizontal rail 192HP for cutting to length

**Material:**  
Extruded aluminum

**Surface Finish:**  
Clear chromated  
²Flash anodized



Usable width (HP)	Packs of	Order No.
21	1	3685991
40	1	3684962
42	1	3684570
63	1	3684571
84	1	3684572
84	2	3685268 <sup>1)</sup>
192	1	3688002 <sup>2)</sup>

<sup>1)</sup> Including 4 assembly screws

*Note: Order assembly screws separately.*

	Packs of	Order No.
M4 x 12	100	3654300

Rear Horizontal Rail With Channel For Ripac ECO (C4)

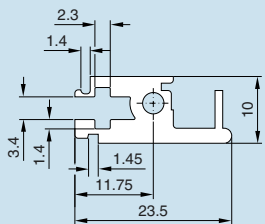


To accommodate guide rails and for the attachment of Z rails, insulating strips or contact strips.

- HP pitch pattern of holes for precise installation of guide rails
- Channel to slide in cover plates
- Threaded inserts (PS3684610) are additionally required for mounting backplanes/Z rails
- M4 thread at ends
- Straight-through core hole
- Not suitable for mounting under cover plates

**Material:**  
Extruded aluminum

**Surface Finish:**  
Clear chromated



Usable width (HP)	Packs of	Order No.
84	1	3688104

*Note: M4 x 12 assembly screws should be ordered separately, see above.*