

## Individual Subrack Components

### Double Horizontal Rails

#### Under B1 there are 3 Versions available:

Version 1 for Dual PCB sizes (2 x 3U or 3U and 6U) above each other or mixed PCB sizes (2 x 3U next to 6U or 6U + 3U next to 9U)

Version 2 for maximum load carrying in a minimum overall system height or for the horizontal mounting of PCBs in a Pizza Box

Version 3 for max load carrying in combinations with other standard front horizontal rails (see above)

#### Double horizontal rails are designed for:

- Improved load carrying (48 kg [8.8 lbs] per PCB at 4HP)
- Improved connector force encounter (over 1000N [225 lbf] per slot)
- Anti twist Injector/Extractor Handle interface
- 9U applications
- Max airflow design (max gap between front/rear rail)

- EMC improvement (no gap between 2 rails)
- Dual or mixed PCB size applications (2 x 3U in 6U, etc)

### Double Front Horizontal Rail, With 10 mm Extension (B1)-Version 1



For the attachment of Guide Rails on both sides.  
One side with 10 mm extension  
One side without 10 mm extension

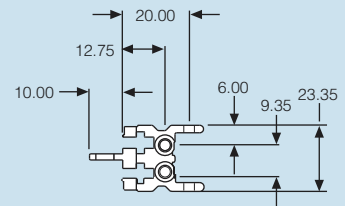
**Material/Surface Finish:**  
Clear chromated

EMC gaskets, see page 177

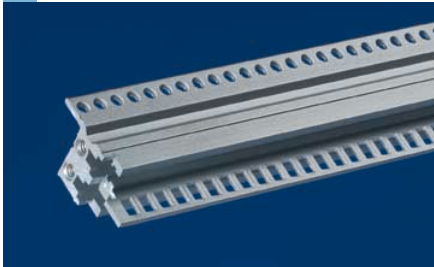
Usable width (HP)	Packs of	Order No.
84	1	3688704

Note: Order assembly screws separately.

	Packs of	Order No.
M4 x 12	100	3654300



### Double Front Horizontal Rail, With 10 mm Extension (B1)-Version 2



For the attachment of Guide Rails on one side only.  
One side with 10 mm extension  
One side without 10 mm extension

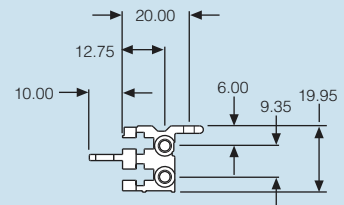
**Material/Surface Finish:**  
Clear chromated

EMC gaskets, see page 177

Usable width (HP)	Packs of	Order No.
84	1	3687724

Note: Order assembly screws separately.

	Packs of	Order No.
M4 x 12	100	3654300



### Double Front Horizontal Rail, With 10 mm Extension (B1)-Version 3



For the attachment of guide rails on one side only.

**Material/Surface:**  
Clear chromated

EMC gaskets, see page 177

Usable width (HP)	Packs of	Order No.
84	1	3688024

Note: Order assembly screws separately.

	Packs of	Order No.
M4 x 12	100	3654300

