

Product Information

RiCase



Color Variants



RAL 5018



RAL 5012



RAL 7030

- Desktop enclosure for the installation of 482.6 mm (19") rack-mounted equipment and components
- All-metal design affords a high level of mechanical protection
- Ergonomic handle, base and door variants
- For mobile and stationary use
- 3 color variants as standard

RiCase enclosures are supplied in three color variants as standard. Other colors can also be supplied on request.

In Detail:

RiCase

RiCase enclosures can be configured individually to suit the respective application using doors, handles and front and rear panels.

Handling



Horizontal Carrying Handles
allow easy transportation, even of populated enclosures.



Support Stand/carrying Handle
for portable use, adjusts in 30° increments.
(Order No. see page 258).



Tower Feet
ensure stability of the enclosures, even with vertical installation.



Precise Stackability
is guaranteed, thanks to the designer corners of the bottom and top RiCase, which slot into one another in a non-slip, stable arrangement.

Doors And Covers



The rear is sealed with a blanking plate. However, the symmetrical arrangement also permits population from the rear.
(Order No. see page 261).



A hinged blanking plate improves handling and provides easier access to the rear components
(Order No. see page 261).



The hinged rear door (also for fan installation) is equipped with a security lock.
(Order No. see page 260).

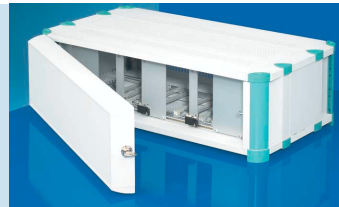


Depending on sitting conditions, the horizontally hinged rear panel can prove particularly useful e.g. for use with the tower version.
(Order No. see page 261).



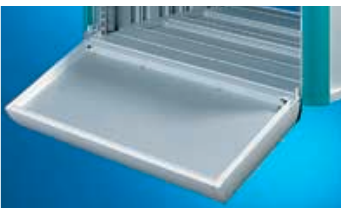
The Front Door

– featuring acrylic glazing or aluminum plate with left-hand or right-hand hinge, as required – protects the display and control components. The painted aluminum frame section is equipped with a security lock
(Order No. see page 259).



Tower Version

In conjunction with a corresponding front door and tower feet, RiCases may be configured as tower enclosures.



Keyboard Lid

Suitable for the installation of 482.6 mm (19") keyboards. Horizontally hinged with security lock.
(Order No. see page 258).