



Pixus Technologies Catalog

Kaparel, Ripac, & Vario Brand Products

Diversity In Perfection. Instrument Cases/System Enclosures



19 Plants, 40 Subsidiaries

Over 8,000 Standard Products

Involvement In Standardization Bodies

And Much More

As well as the classic Kaparel/Rittal instrument case, with its numerous application benefits, the RiCase instrument case will also impress you, with its modern design in numerous colour variants and, above all, its all-metal enclosure construction.

The Ripac Vario-Module system enclosure is fully compatible with the latest Ripac subrack range, making it ideal for individual installation and configuration as a microcomputer system. All in all, the design and function of this range are sure to impress.



RiBox

System enclosure for the horizontal installation of single boards or the installation of routers, hubs and modems.

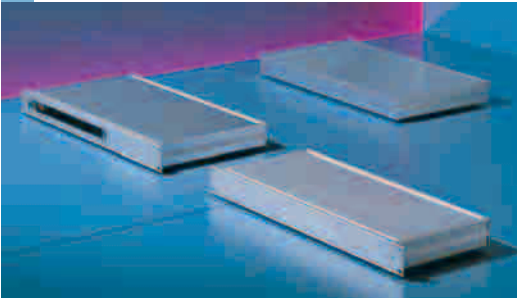
Ripac Vario-Module

Shown left as an instrument case in 7U. The 6U subracks are cooled diagonally. The fans are located on the rear panel. Optionally also as a rack-mounted enclosure.

RiCase

The modular all-metal enclosure is a perfect "safe" for valuable electronics. The styling and colour add innovative design touches, emphasizing the value of the electronics within.

RiBox



System Enclosures
Order No. see page 234.

Applications

System enclosure for use as instrument case or as a rack-mounted enclosure. For the installation of Euroboards and double Euroboards (horizontal), bridges, hubs, routers or modems.

Design Features

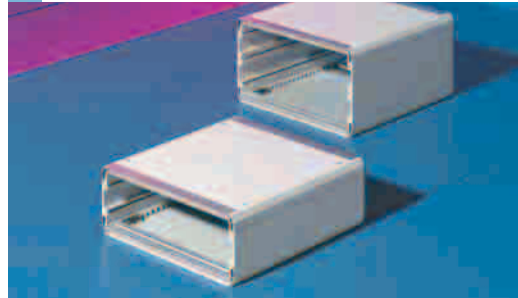
- 482.6 mm (19") system enclosure to IEC 60 297-1
- Optional use as instrument case or rack-mounted enclosure
- Height: 1U/2U
- Installation width: 84HP
- Optionally includes a mounting kit for installing a double Euroboard
- Mounting plate (accessories) for individual population
- Extruded aluminum section
- Protection category IP 40



User Benefits

- Minimum space requirements of just 1U
- Simple and fast assembly
- May easily be changed from instrument case to rack-mounted enclosure
- EMC upgradable
- Individual finishing to customer wishes

Ripac Vario-Module



System Enclosures
Order No. see pages 238-247.

Applications

System enclosure for use as instrument case or as a rack-mounted enclosure. For the installation of PCBs and board type plug-in units. Suitable for mobile and non-mobile applications.

Design Features

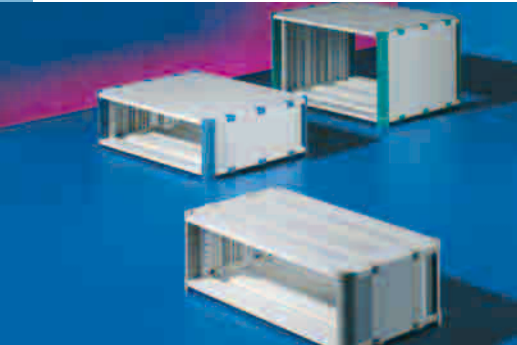
- 482.6 mm (19") system enclosure to IEC 60 297-1
- Optional use as instrument case or rack-mounted enclosure
- Heights: 1 - 8U
- Installation widths: 42, 63, 84HP
- Depths: 250 - 370 mm
- Protection category IP 40
- Extruded aluminum section
- Depth-variable interior installation



User Benefits

- May easily be changed from instrument case to rack-mounted enclosure
- EMC upgradable
- Depth-variable interior installation
- Wide range of accessories
- Neutral design

RiCase



Instrument Cases

Order No. see page 252-261.

Applications

Instrument case for the installation of 482.6 mm (19") slide-in equipment and components. Suitable for mobile and non-mobile applications.

Design Features

- Instrument case to IEC 60 297-3
- Heights: 1 - 12U
- Installation widths: 269.2 mm (1/2 19") and 482.6 mm (19")
- Depths: 300 - 540 mm
- Protection category IP 40
- Extruded aluminum section
- Symmetrical design
- Depth-/height-variable interior installation



User Benefits

- High level of stability
- Optionally as Tower enclosure
- 3 colors as standard
- Ergonomic handle, feet and door variants
- For mobile and non-mobile use

Order Information

RiBox System Enclosures 1U/2U

	Order No. 482.6 mm (19") rack mount					Order No. 482.6 (19") rack mount including mounting kit for double Euroboards	
U	1	1	1	1	1	-	-
Width (B) mm	482.6 (19")	482.6 (19")	482.6 (19")	482.6 (19")	482.6 (19")	482.6 (19")	482.6 (19")
Depth (T) mm	150	200	250	300	350	250	350
Order No.	3687814	3687815	3687816	3687817	3687818	3684072	3684073
Supply Includes							
Side panel	2	2	2	2	2	2	2
Front panel	1	1	1	1	1	1	1
Rear panel	1	1	1	1	1	1	1
Base/cover tray	2	2	2	2	2	2	2
Mounting kit	-	-	-	-	-	1	1
	Order No. desktop housing						
U	1	1	1	1	1	-	-
Width (B) mm	447	447	447	447	447	-	-
Depth (T) mm	150	200	250	300	350	-	-
Order No.	3687819	3687820	3687821	3687822	3687823	-	-
Supply Includes							
Side panel	2	2	2	2	2	-	-
Front panel	1	1	1	1	1	-	-
Rear panel	1	1	1	1	1	-	-
Base/cover tray	2	2	2	2	2	-	-
Accessories							
EMC set	3684080	3684080	3684080	3684080	3684080	3684080	3684080
Mounting plate	3684074	3684075	3684076	3684077	3684078	-	-

19" RiBox

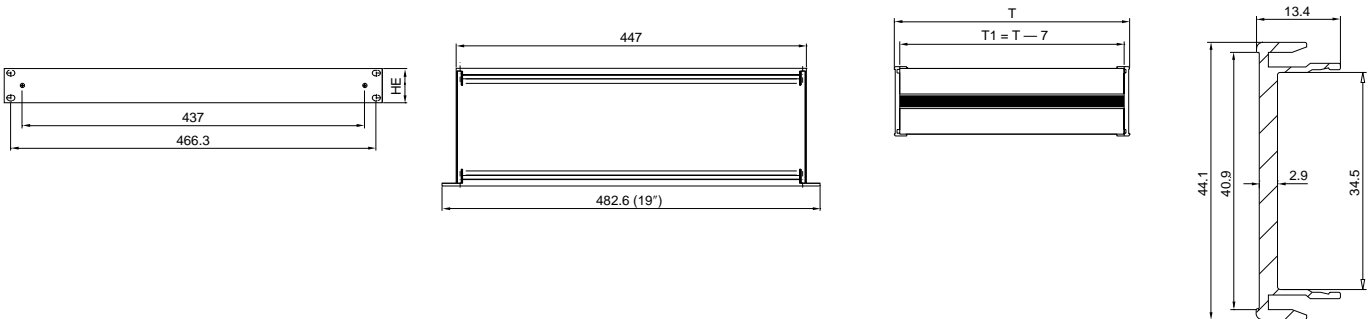
U	2	2	2	2	2
# of cPCI or VME slots	3	3	3	3	3
Width mm	447 (17.64")	447 (17.64")	447 (17.64")	447 (17.64")	447 (17.64")
Depth mm	150 (5.91")	200 (7.87")	250 (9.84")	300 (11.81")	350 (13.78")
Order No. 1 pc.	3689044	3689045	3689046	3689047	3689048

Finish

Clear chromated, conductive

For the desktop version of the RiBox (same Width(W) and Depth(D) dimensions), please contact the factory.
If recessed or flexible 19" rack mounting flanges are required, please contact the factory.

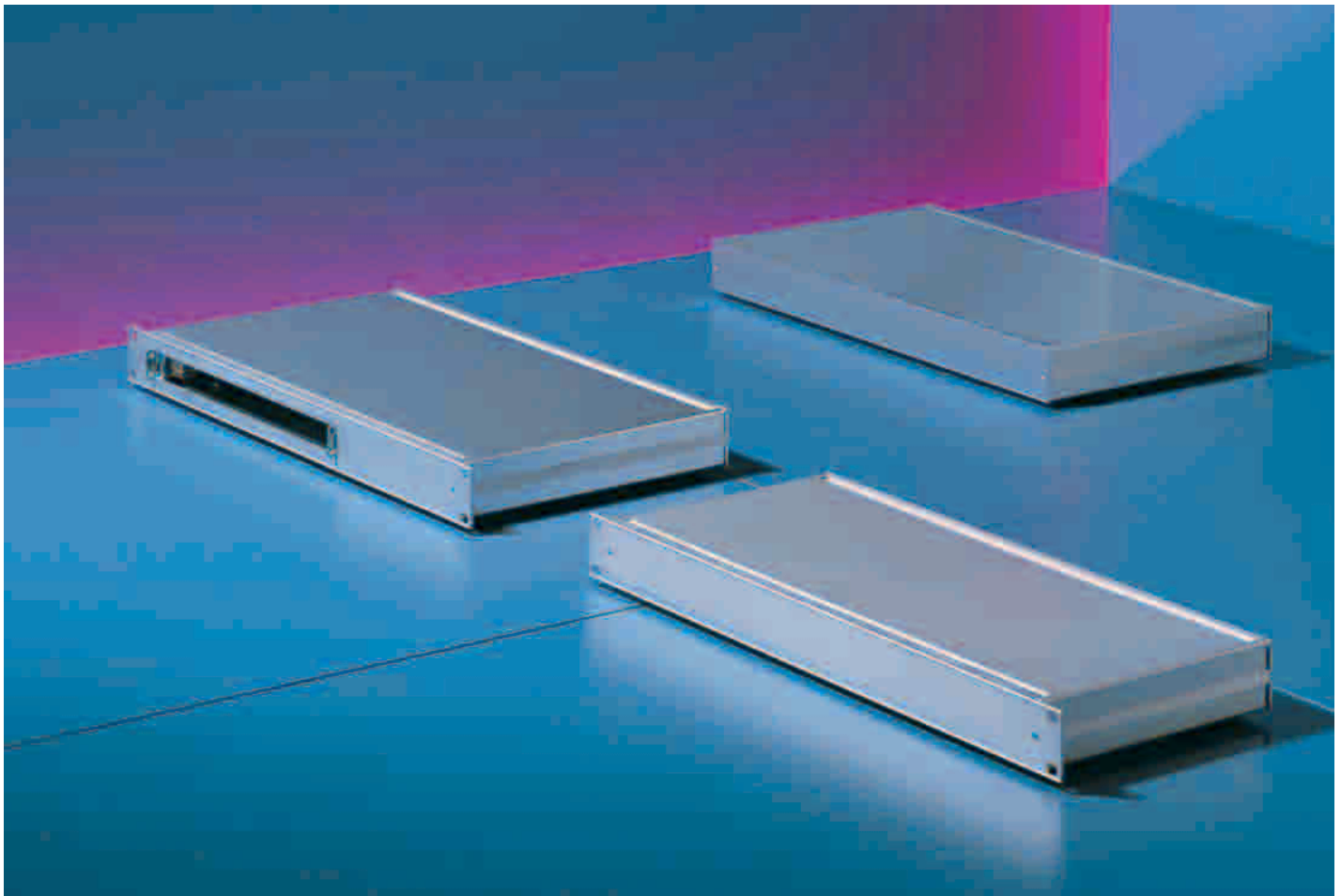
482.6 mm (19") Rack Mount



Desktop Housing



RiBox System Enclosures 1U/2U



The housing system RiBox was designed for the horizontal mounting of single boards and board type plug-in units, and for the installation of routers, hubs or modems.

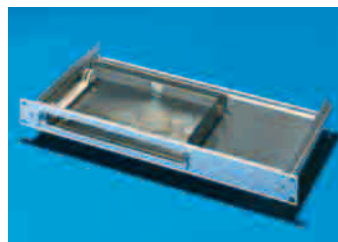
Technical Specifications:

System enclosures 1U/2U, 150/200/250/300 or 350 mm deep
 Easy to assemble with just 4 screws
 Optionally for use as an instrument case or rack-mounted enclosure
 Front panel to hold a cover film to conceal the screws
 Maximum possible interior useful space
 Optional EMC upgrades with additional EMC gaskets
 Option of installing 1 VME or CompactPCI board horizontally or 1U

Material/Surface Finish:

Side Panels: Extruded aluminum section, untreated
 Base/Cover Trays: Aluminum, clear chromated
 Front/Rear Panel: Extruded aluminum section, clear chromated
 Mounting Plate: Sheet steel
 System enclosure 1U/2U to IEC 60 297-1. Optionally available for rack-mounting in the enclosure or as an instrument case version.

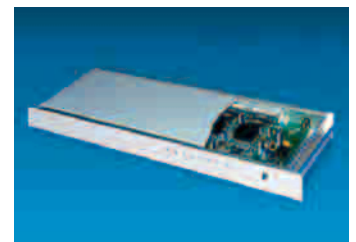
- Minimal space requirement of just 1U
- Designed as either a desktop or rack unit
- Individual finishing to customer wishes
- Simple assembly with only 4 screws
- EMC upgrades available



Mounting Kit And Plate of sheet steel for individual installations.
 Order No. see page 234.



EMC Set
 Order No. see page 234.



Horizontal Circuit-board Mounting.

In Detail:

System Enclosure Ripac Vario-Module

The ideal enclosure solution for variable applications. The Ripac Vario-Module system enclosure can be used either as an instrument case or rack-mounted enclosure, due to the installation of corner trims or 482.6 mm (19") flanges in the front section, which allow it to be adapted to suit existing applications.

Design Features



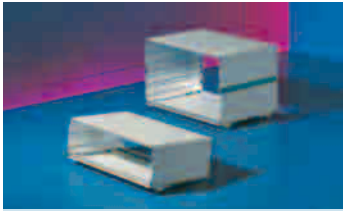
Front Corner Trim Piece
for configuration as an instrument case.



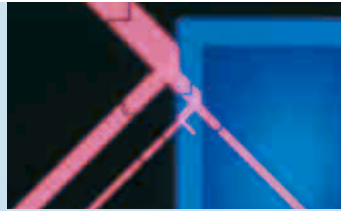
Front Flanges
for configuration as a rack-mounted enclosure.



Variable Interior Installation
with system components from the Ripac subrack range.



Basic EMC Protection
due to the all-metal enclosure with conductive contact points.



EMC Expansion Flanges
and corner trim panels prepared for the installation of EMC gaskets.



PE Conductor Set
for connecting the cover plates/gland plates to the side panels with Protective Earth conductors.



Support Stand/Carrying Handle
to fit all 3, 4 and 6U enclosures. Adjustable on a 30° angle.



Rear Adjustable Feet
may be retro-fitted. They provide mechanical protection for the connection elements and allow power cables to be wound up during transportation.



Front Handles
for mounting on the flanges (with mounting holes).



Microcomputer Packaging System
with a backplane and power supply unit, the Ripac Vario-Module is easily upgraded to a complete MPS system.



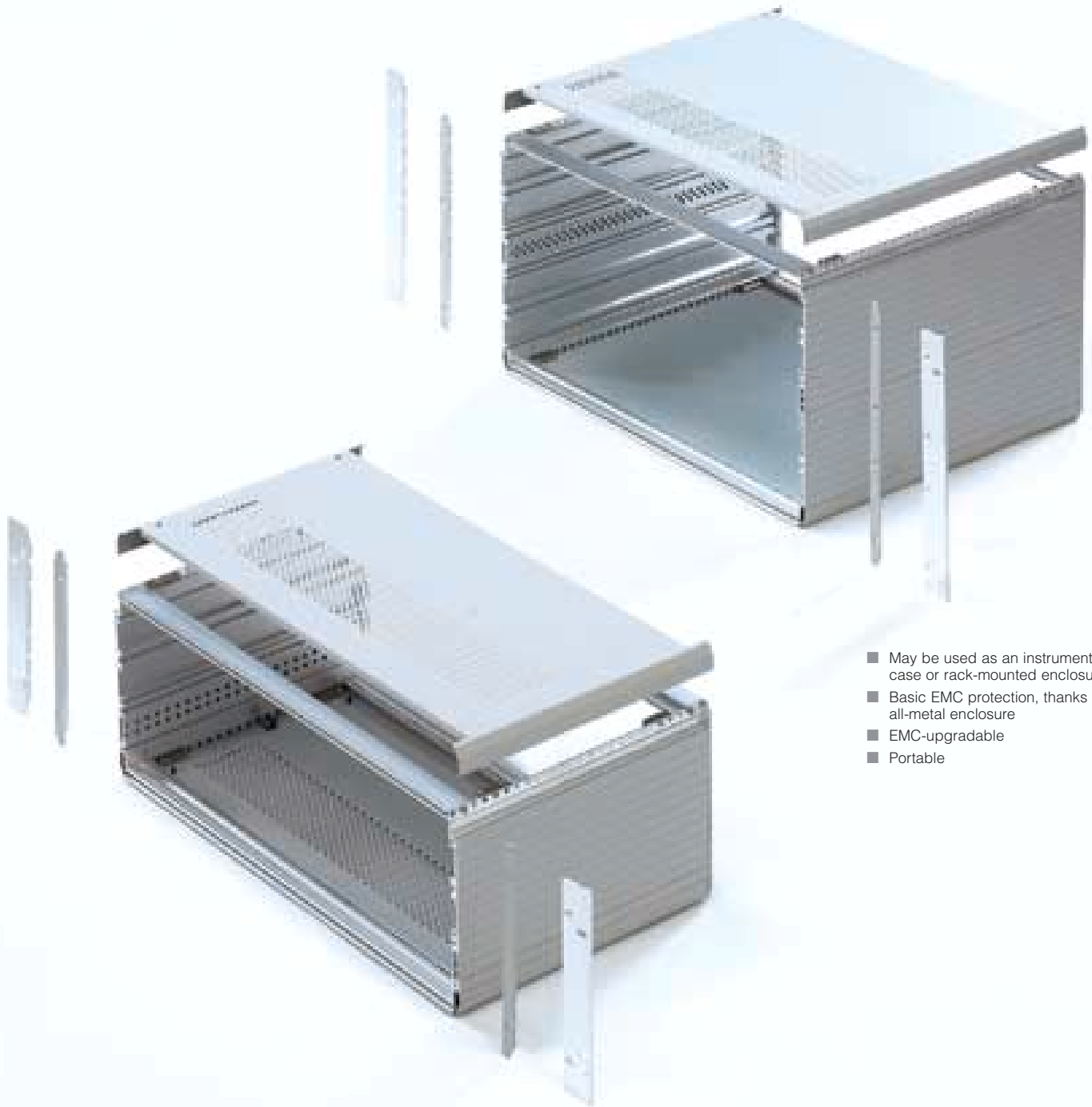
Keyboard Lid 4U, 84HP
for retrospective, front mounting on 4U high, 84HP wide enclosures. Prepared to accommodate mechanical or membrane keyboards.



Acrylic Front Doors
horizontally hinged to protect the installed control components.

Product Information

System Enclosure Ripac Vario-Module



- May be used as an instrument case or rack-mounted enclosure
- Basic EMC protection, thanks to all-metal enclosure
- EMC-upgradable
- Portable

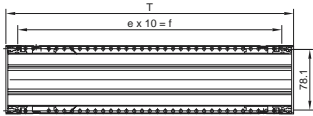
Order Information

Ripac Vario-Module 2U, 3U/42 HP, 63HP

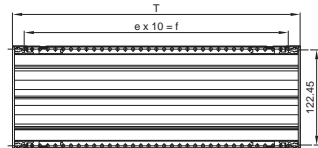
Rail type	Ripac Vario-Module	Packs of	2U		3U				Page
	Installation width (HP)		42	42	42	42	63	63	
	Depth (mm)		250.4	310.4	250.4	310.4	250.4	310.4	
	Enclosure Order No. VM without vent holes	1	3981000	3981020	-	-	-	-	
	Enclosure Order No. VM with vent holes	1	-	-	3981040	3981070	3981050	3981080	
	e		22	28	22	28	22	28	
	B1		235.6	253.6	235.6	235.6	342.3	342.3	
	B2		251.6	251.6	251.6	251.6	358.3	358.3	
Expansion Accessories/Individual Parts									
	Corner trim pieces for assembly as instrument case	2	3981300	3981300	3981310	3981310	3981310	3981310	246
	Mounting flanges for assembly as rack-mounted unit – without handle holes – with handle holes	2	3981200	3981200	3981210	3981210	3981210	3981210	246
		2	-	-	3981260	3981260	3981260	3981260	246
A	Front horizontal rails (not suitable for depth-adjustable installation)	1	3684560	3684560	3684560	3684560	3684561	3684561	173
B	Front horizontal rails, with 10 mm extension for injector/extractor handles (not suitable for depth-adjustable installation)	1	3684565	3684565	3684565	3684565	3684566	3684566	173
C1	Rear horizontal rails	1	3684570	3684570	3684570	3684570	3684570	3684570	175
F	Z rail DIN 41 612	1	3684600	3684600	3684600	3684600	3684601	3684601	177
G	Insulating strips (21HP)	1	3684611	3684611	3684611	3684611	3684611	3684611	178
H	Conductive strips (84HP)	1	3684612	3684612	3684612	3684612	3684612	3684612	178
I	Threaded inserts	1	3684608	3684608	3684608	3684608	3684609	3684609	177
EMC Expansion									
K	EMC gaskets, horizontal – top/bottom cover to horizontal rail	1	3684807	3684807	3684807	3684807	3684807	3684807	177
	EMC gaskets, vertical Front/rear panel, EMC	1	3686974	3686974	3686975	3686975	3686975	3686975	179
			see pages 200-211						
Other Accessories									
	Front/rear panels		see pages 200-211						
	Carrying handles	2	3981350	3981360	3981350	3981360	3981350	3981360	247
	Front handles*	2	-	-	3636010	3636010	3636010	3636010	246
	Acrylic front door	1	-	-	3981420	3981420	3981430	3981430	247
	Rear adjustable feet	4	3901000	3901000	3901000	3901000	3901000	3901000	247

*Only in conjunction with mounting flanges with handle holes

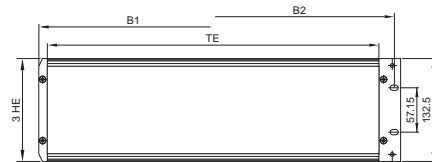
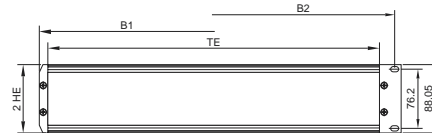
2U



Section B-B



3U



T = Depth
HE = U
TE = HP

Ripac Vario-Module 2U, 3U/42 HP, 63HP



Technical Specifications:

May be used as a rack mounted unit or instrument case

External dimensions to DIN 41 494, part 1 for installation in enclosures, 482.6 mm (19")

Installation dimensions for board type plug-in units to DIN 41 494, part 5 and DIN IEC 60 297-3 and IEEE 1101.1/1101.10

Protection Category:

IP 40 for non-vented version

Material/Surface Finish:

Side panels:
Extruded aluminum section, spray finished in RAL 7035

Horizontal rails:
Extruded aluminum section, spray finished in RAL 7035

Corner trim:
Die-cast zinc, spray finished in RAL 7035

Covers:
Sheet steel, spray finished in RAL 7035

Side trim:
Extruded aluminum section, spray finished in RAL 7035

Contact paints:
Conductive

Supply Includes:

- 2 side panels
- 1 top cover with/without vent holes
- 1 bottom cover with/ without vent holes
- 4 horizontal rails
- 4 threaded inserts
- 2 rear corner trim pieces for EMC gaskets
- Assembly parts



Corner Trim Pieces

With channel to hold EMC gaskets
Order No. see page 246.

Ripac Vario-Module Accessories:

See page 246-247

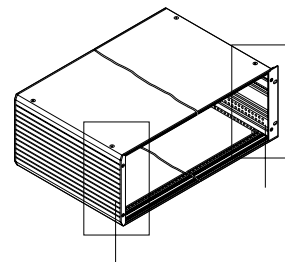
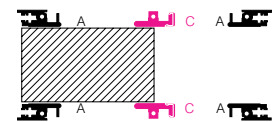
Horizontal Rails:

From page 173

Color:

RAL 7035
RAL 5018

Horizontal Rails Configuration



1) Equipped As An Instrument Case:

Front corner trim must be ordered separately.

2) Equipped As A Rack-Mounted Unit:

Mounting flanges must be ordered separately.



Included in the supply



To be ordered separately, depending on application

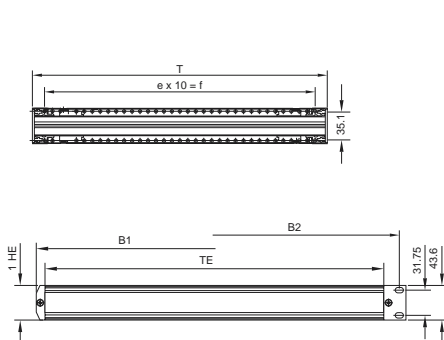
Order Information

Ripac Vario-Module 1U, 2U, 3U/84HP

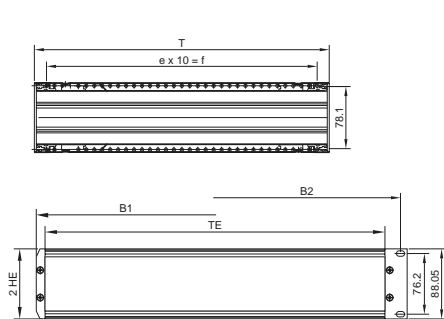
Rail type	Ripac Vario-Module	Packs of	1U			2U		3U			Page
	Installation width (HP)		84	84	84	84	84	84	84	84	
	Depth (mm)		250.4	310.4	370.4	250.4	310.4	250.4	310.4	370.4	
	Enclosure Order No. VM without vent holes	1	3981001	3981002	3981003	3981010	3981030	-	-	-	
	Enclosure Order No. VM with vent holes	1	-	-	-	-	-	3981060	3981090	3981100	
	e		22	28	34	22	28	22	28	34	
	B1		449.0	449.0	449.0	449.0	449.0	449.0	449.0	449.0	
	B2		465.1	465.1	465.1	465.1	465.1	465.1	465.1	465.1	
Expansion Accessories/Individual Parts											
	Top cover, non vented	1	-	-	-	3981900	3981910	3981900	3981910	3981920	
	Top cover, vented	1	-	-	-	3981940	3981950	3981940	3981950	3981960	
	Bottom cover, non vented	1	-	-	-	3981700	3981710	3981700	3981710	3981720	
	Bottom cover, vented	1	-	-	-	3981740	3981750	3981740	3981750	3981760	
	Corner trim pieces for assembly as instrument case	2	3981570	3981570	3981570	3981300	3981300	3981310	3981310	3981310	246
	Mounting flanges for assembly as rack-mounted unit – without handle holes	2	3981580	3981580	3981580	3981200	3981200	3981210	3981210	3981230	246
	– with handle holes	2	-	-	-	-	-	3981260	3981260	3981280	246
A	Front horizontal rails (not suitable for depth-adjustable installation)	1	3684562	3684562	3684562	3684562	3684562	3684562	3684562	3684562	173
B	Front horizontal rails with 10 mm extension for injector/extractor handles (not suitable for depth-adjustable installation)	1	-	-	-	3684567	3684567	3684567	3684567	3684567	173
C1	Rear horizontal rails	1	3684572	3684572	3684572	3684572	3684572	3684572	3684572	3684572	175
F	Z rail DIN 41 612	1	-	-	-	3684602	3684602	3684602	3684602	3684602	177
G	Insulating strips (21HP)	1	-	-	-	3684611	3684611	3684611	3684611	3684611	178
H	Conductive strips (84HP)	1	-	-	-	3684612	3684612	3684612	3684612	3684612	178
I	Threaded inserts	1	3684610	3684610	3684610	3684610	3684610	3684610	3684610	3684610	177
EMC Expansion											
K	EMC gaskets, horizontal – for top/bottom cover to horizontal rail	1	3684807	3684807	3684807	3684807	3684807	3684807	3684807	3684807	177
	EMC gaskets, vertical	1	3686973	3686973	3686973	3686974	3686974	3686975	3686975	3686975	179
	Front/rear panel, EMC		See pages 200-211								
Other Accessories											
	Front/rear panels		See pages 200-211								
	Carrying handles	2	3981350	3981360	3981370	3981350	3981360	3981350	3981360	3981370	247
	Front handles*	2	-	-	-	-	-	3636010	3636010	3636010	246
	Acrylic front door	1	-	-	-	-	-	3981440	3981440	3981440	247
	Rear adjustable feet	4	3901000	3901000	3901000	3901000	3901000	3901000	3901000	3901000	247

*Only in conjunction with mounting flanges with handle holes

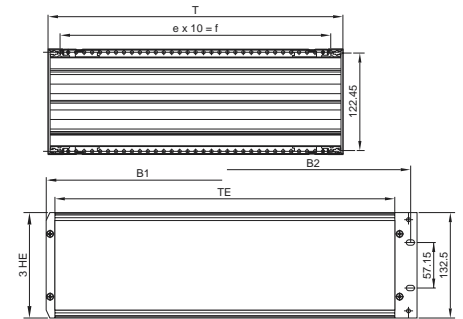
1U



2U



3U



T = Depth
HE = U
TE = HP

Ripac Vario-Module 1U, 2U, 3U/84HP



Technical Specifications:

May be used as a rack mounted unit or instrument case
 External dimensions to DIN 41 494, part 1 for installation in enclosures, 482.6mm (19")
 Installation dimensions for board type plug-in units to DIN 41 494, part 5 and DIN IEC 60 297-3 and IEEE 1101.1/1101.10

Protection Category:

IP 40 for non-vented version

Material/Surface Finish:

Side panels:
 Extruded aluminum section, spray finished in RAL 7035*
 Horizontal rails:
 Extruded aluminum section, spray finished in RAL 7035
 Corner trim:
 Die-cast zinc, spray finished in RAL 7035
 Covers:
 Sheet steel, spray finished in RAL 7035
 Side trim:
 Extruded aluminum section, spray finished in RAL 7035
 Contact points:
 Conductive
 *Colors: (see page 239)

Supply Includes:

- 2 side panels
- 1 top cover with/without vent holes
- 1 bottom cover with/without vent holes
- 4 horizontal rails
- 4 threaded inserts
- 2 rear corner trim pieces for EMC gaskets
- Assembly parts

Ripac Vario-Module Accessories:

See pages 246-247

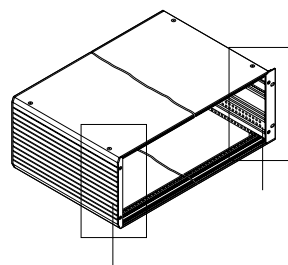
Horizontal Rails:

From page 173



Front Horizontal Rail With 10 mm Extension

For injector/extractor handles
 Order No. see page 246.



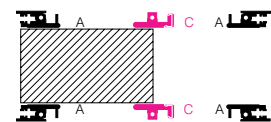
1) Equipped As An Instrument Case:

Front corner trim must be ordered separately.

2) Equipped As A Rack-Mounted Unit:

Mounting flanges must be ordered separately.

Horizontal Rails Configuration



- Included in the supply
- To be ordered separately, depending on application

The front horizontal rails (A or B) and rear horizontal rails (C and D) are equipped as per the table on page 172.

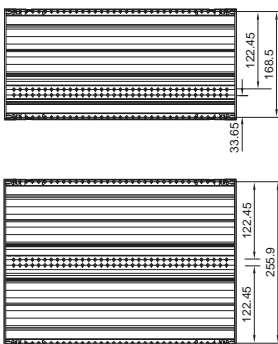
Order Information

Ripac Vario-Module 4U, 6U

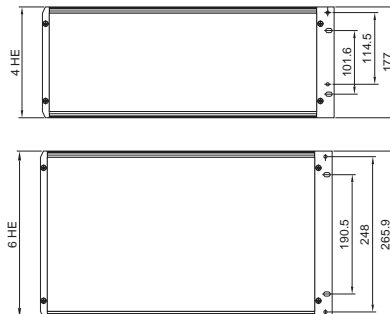
Rail type	Ripac Vario-Module	Packs of	4U (3 + 1)			6U			Page
	Installation width (HP)		84	84	84	84	84	84	
	Depth (mm)		250.4	310.4	370.4	310.4	370.4	430.4	
	Enclosure Order No. VM without vent holes	1	-	-	-	-	-	-	
	Enclosure Order No. VM with vent holes	1	3981110	3981120	3981130	3981140	3981150	3981160	
	e		22	28	34	28	34	40	
	B1		449.0	449.0	449.0	449.0	449.0	449.0	
	B2		465.1	465.1	465.1	465.1	465.1	465.1	
Expansion Accessories/Individual Parts									
	Top cover, solid	1	3981900	3981910	3981920	3981910	3981920	3981930	
	Top cover, vented	1	3981940	3981950	3981960	3981950	3981960	3981970	
	Bottom cover, solid	1	3981700	3981710	3981720	3981710	3981720	3981730	
	Gland plate, vented	1	3981740	3981750	3981760	3981750	3981760	3981770	
	Corner trim pieces for assembly as instrument case	2	3981320	3981320	3981320	3981330	3981330	3981330	246
	Mounting flanges for assembly as rack-mounted unit – without handle holes	2	3981220	3981220	3981220	3981230	3981230	3981230	246
	– with handle holes	2	3981270	3981270	3981270	3981280	3981280	3981280	246
A	Front horizontal rails (not suitable for depth-adjustable installation)	1	3684562	3684562	3684562	3684562	3684562	3684562	173
B	Front horizontal rails with 10 mm extension for injector/extractor handles (not suitable for depth-adjustable installation)	1	3684567	3684567	3684567	3684567	3684567	3684567	173
C1	Rear horizontal rails	1	3684572	3684572	3684572	3684572	3684572	3684572	175
D1	Rear horizontal rails, center	1	-	-	-	3684582	3684582	3684582	176
E	Rear adapter rail, center	1	-	-	-	3684591	3684591	3684591	176
F	Z rail DIN 41 612	1	3684602	3684602	3684602	3684602	3684602	3684602	177
G	Insulating strips (21HP)	1	3684611	3684611	3684611	3684611	3684611	3684611	178
H	Conductive strips (84HP)	1	3684612	3684612	3684612	3684612	3684612	3684612	178
I	Threaded inserts	1	3684610	3684610	3684610	3684610	3684610	3684610	177
EMC Expansion									
K	EMC gaskets, horizontal – for top/bottom cover to horizontal rail	1	3684807	3684807	3684807	3684807	3684807	3684807	177
	EMC gaskets, vertical	1	3686976	3686976	3686976	3686977	3686977	3686977	179
	Front/rear panel, EMC		See pages 200-211						
Other Accessories									
	Front / rear panels		See pages 200-211						
	Carrying handles	2	3981350	3981360	3981370	3981360	3981370	3981380	247
	Front handles*	2	3636010	3636010	3636010	3666010	3666010	3666010	246
	Acrylic front door	1	3981450	3981450	3981450	3981460	3981460	3981460	247
	Rear adjustable feet	4	3901000	3901000	3901000	3901000	3901000	3901000	247

*Only in conjunction with mounting flanges with handle hole

4U (3 + 1)

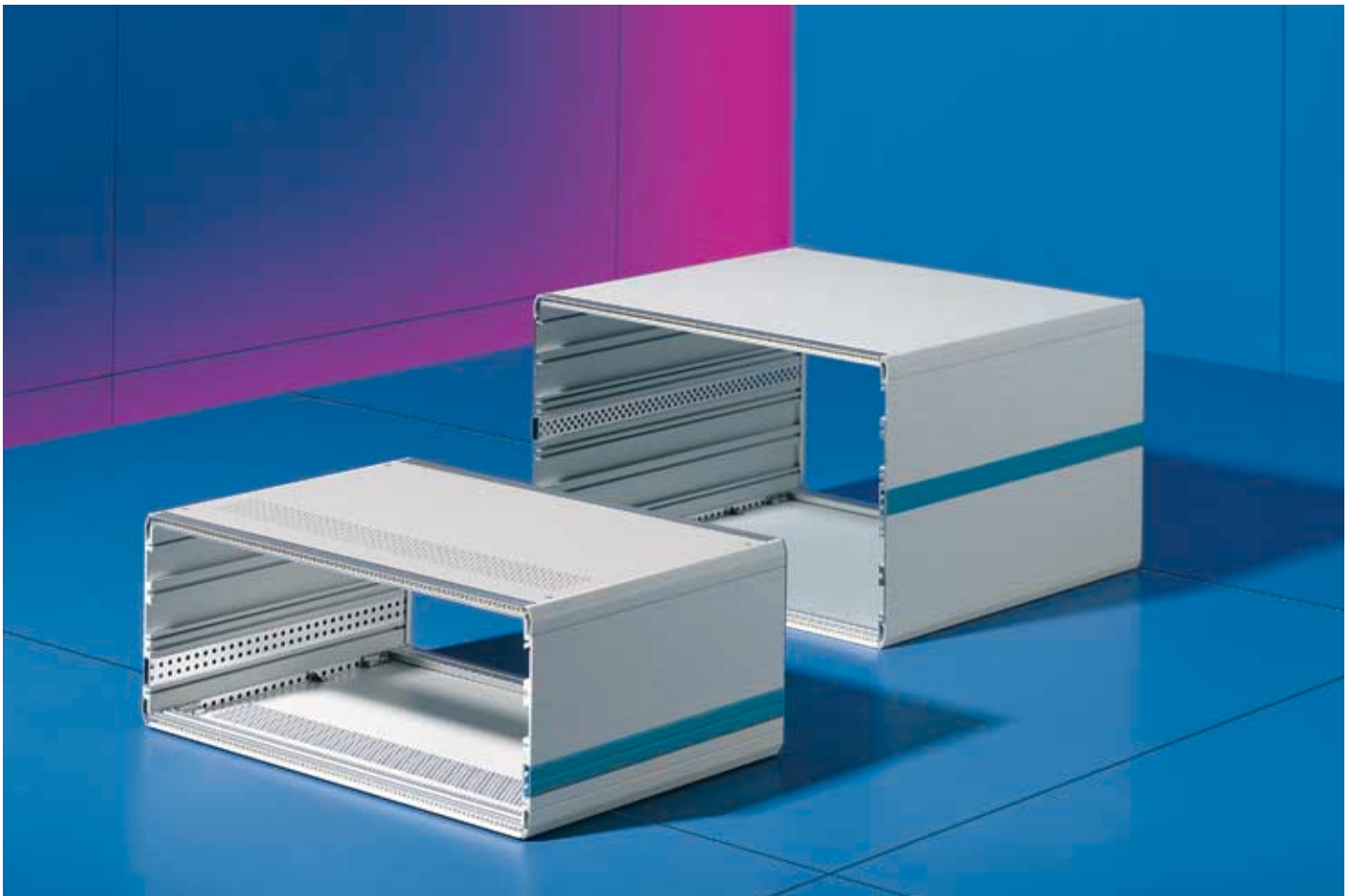


6U



T = Depth
HE = U
TE = HP

Ripac Vario-Module 1U, 2U, 3U/84HP



Technical Specifications:

May be used as a rack mounted unit or instrument case
 External dimensions to DIN 41 494, part 1 for installation in enclosures, 482.6 mm (19")
 Installation dimensions for board type plug-in units to DIN 41 494, part 5 and DIN IEC 60 297-3 and IEEE 1101.1/1101.10

Protection Category:

IP 40 for solid version

Material/Surface Finish:

Side panels:
 Extruded aluminum section, spray finished in RAL 7035*
 Horizontal rails:
 Extruded aluminum section, spray finished in RAL 7035
 Corner trim:
 Die-cast zinc, spray finished in RAL 7035
 Covers:
 Sheet steel, spray finished in RAL 7035
 Side trim:
 Extruded aluminum section, spray finished in RAL 7035
 Contact points:
 Conductive
 *Colors: (see page 239)

Supply Includes:

- 2 side panels
- 1 top cover with/without vent holes
- 1 bottom cover with/without vent holes
- 4 horizontal rails
- 4 threaded inserts
- 2 rear corner trim pieces for EMC gaskets
- Assembly parts

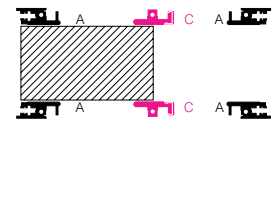
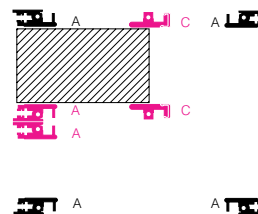
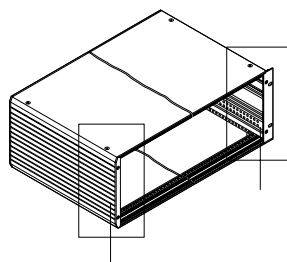
Ripac Vario-Module Accessories:

See pages 246-247

Horizontal Rails:

From page 173


Horizontal Rails Configuration



1) Equipped As An Instrument Case:

Front corner trim must be ordered separately.

 Included in the supply

 To be ordered separately, depending on application

2) Equipped As A Rack-Mounted Unit:

Mounting flanges must be ordered separately.

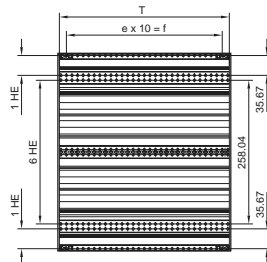
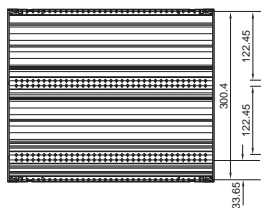
Order Information

Ripac Vario-Module 7U, 8U

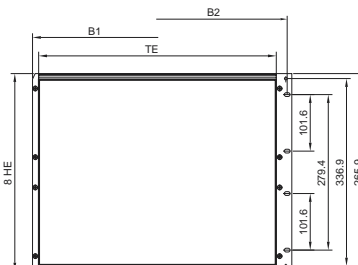
Rail type	Ripac Vario-Module 7/8U	Packs of	7U (6 + 1)			8U (2 x 3 + 2 x 1)			Page
	Installation width (HP)		84	84	84	84	84	84	
	Depth (mm)		310.4	370.4	430.4	310.4	370.4	430.4	
	Enclosure Order No. VM without vent holes	1	-	-	-	3981175	3981185	3981195	
	Enclosure Order No. VM with vent holes	1	3981170	3981180	3981190	-	-	-	
	e		28	34	40	28	34	40	
	B1		449.0	449.0	449.0	449.0	449.0	449.0	
	B2		465.1	465.1	465.1	465.1	465.1	465.1	
Expansion Accessories/Individual Parts									
	Top cover, non vented	1	3981910	3981920	3981930	3981910	3981920	3981930	
	Top cover, vented	1	3981950	3981960	3981970	3981950	3981960	3981970	
	Bottom cover, non vented	1	3981710	3981720	3981730	3981710	3981720	3981730	
	Bottom cover, vented	1	3981750	3981760	3981770	3981750	3981760	3981770	
	Corner trim pieces for assembly as instrument case	2	3981340	3981340	3981340	3981590	3981590	3981590	246
	Mounting flanges for assembly as rack-mounted unit – without handle holes	2	3981240	3981240	3981240	3981250	3981250	3981250	246
	– with handle holes	2	3981290	3981290	3981290	3981560	3981560	3981560	246
A	Front horizontal rails (not suitable for depth-adjustable installation)	1	3684562	3684562	3684562	3684562	3684562	3684562	173
B	Front horizontal rails, with 10 mm extension for injector/extractor handles not suitable for depth-adjustable installation)	1	3684567	3684567	3684567	3684567	3684567	3684567	173
C1	Rear horizontal rails	1	3684572	3684572	3684572	3684572	3684572	3684572	175
D1	Rear horizontal rails, center	1	3684582	3684582	3684582	3684582	3684582	3684582	176
E	Rear adapter rail, center	1	3684591	3684591	3684591	3684591	3684591	3684591	176
F	Z rail DIN 41 612	1	3684602	3684602	3684602	3684602	3684602	3684602	177
G	Insulating strips (21HP)	1	3684611	3684611	3684611	3684611	3684611	3684611	178
H	Conductive strips (84HP)	1	3684612	3684612	3684612	3684612	3684612	3684612	178
I	Threaded inserts	1	3684610	3684610	3684610	3684610	3684610	3684610	177
EMC Expansion									
K	EMC gaskets, vertical								See pages 171, 177, 188
	Front/rear panel, EMC								See pages 200-211
Other Accessories									
	Front / rear panels								See pages 200-211
	Carrying handles	2	3981360	3981370	3981380	3981360	3981370	3981380	247
	Front handles*	2	3666010	3666010	3666010	-	-	-	246
	Acrylic front door	1	3981470	3981470	3981470	-	-	-	247
	Rear adjustable feet	4	3901000	3901000	3901000	3901000	3901000	3901000	247

*Only in conjunction with mounting flanges with handle holes

7U (6 + 1)



8U (2 x 3 + 2 x 1)



T = Depth
HE = U
TE = HP



Technical Specifications:

May be used as a rack mounted unit or instrument case

External dimensions to DIN 41 494, part 1 for installation in enclosures, 482.6 mm (19")

Installation dimensions for board type plug-in units to DIN 41 494, part 5 and DIN IEC 60 297-3 and IEEE 1101.1/1101.10

Protection Category:

IP 40 for non-vented version

Material/Surface Finish:

Side panels:
Extruded aluminum section, spray finished in RAL 7035*

Horizontal rails:
Extruded aluminum section, spray finished in RAL 7035

Corner trim:
Die-cast zinc, spray finished in RAL 7035

Covers:
Sheet steel, spray finished in RAL 7035

Side trim:
Extruded aluminum section, spray finished in RAL 7035

Contact points:
Conductive

*Colors: (see page 239)

Supply Includes:

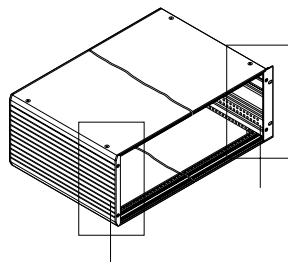
- 2 side panels
- 1 top cover with/without vent holes
- 1 bottom cover with/without vent holes
- 4 horizontal rails
- 4 threaded inserts
- 2 rear corner trim pieces for EMC gaskets
- 2 side trim pieces, center
- Assembly parts

Ripac Vario-Module Accessories:

See pages 246-247

Horizontal Rails:

From page 173



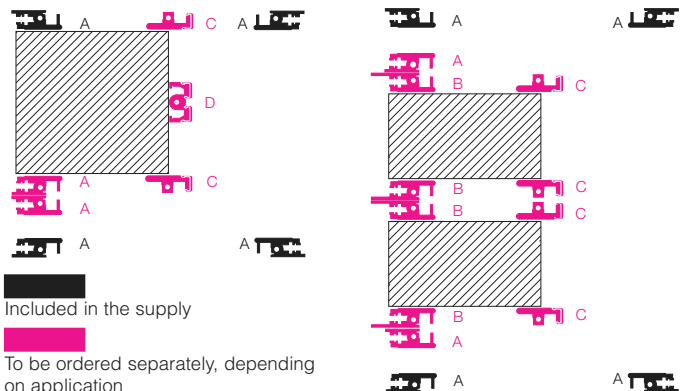
1) Equipped As An Instrument Case:

Front corner trim must be ordered separately.

2) Equipped As A Rack-Mounted Unit:

Mounting flanges must be ordered separately.

Horizontal Rails Configuration



Accessories

Ripac Vario-Module

Enclosure Population

System components from the Ripac range can be used for individual interior installation of the enclosures (see page 149.)

Feet



With fold-out support stand.
Load capacity up to 20 kg.

Material:
Plastic, RAL 7035

	Packs of	Order No.
	2	3919000

Front Flanges



Required when the Ripac Vario-Module is to be used as a rack-mounted enclosure. The flanges have a channel to hold vertical EMC gaskets.
Order No. see page 171.

Material:
Aluminum, clear chromated

U	Packs of	Order No.*	Order No.**
1	2	3981580*	–
2	2	3981200*	–
3	2	3981210*	3981260**
4	2	3981220*	3981270**
6	2	3981230*	3981280**
7	2	3981240*	3981290**
8	2	3981250*	3981560**

*Without handle holes

**With handle holes

Front Corner Trim Pieces



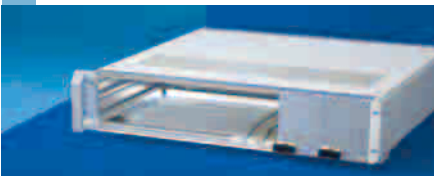
Required when the Ripac Vario-Module is to be used as an instrument case. The corner trim pieces have a channel to hold vertical EMC gaskets.

Order No. see page 171.

Material:
Die-cast zinc
Color:
RAL 7035

U	Packs of	Order No.
1	2	3981570
2	2	3981300
3	2	3981310
4	2	3981320
6	2	3981330
7	2	3981340
8	2	3981590

Front Handles



Can only be used in conjunction with mounting flanges with handle holes.

Material:
Die-cast zinc, spray finished

For U	Packs of	Order No.
3 and 4	2	3636010
6 and 7	2	3666010

EMC Gaskets



The enclosures can be fitted or retro-fitted to meet EMC requirements using EMC gaskets from the Ripac range.

EMC gaskets, vertical
Order No. see page 171.

EMC gaskets, horizontal
Order No. see page 177.

Front Panels/Rear Panels



To cover the front and rear of the enclosure. Also available with hinges, vented for fan installation, or as an EMC version.

Order No. see pages 200-210

Ripac Vario-Module

Carrying Handles



For ergonomic transportation, even with stacked cases. May also be used as a support stand. Not suitable for use in conjunction with flanges. Maximum load 350 N.

Material:
Die-cast zinc and extruded aluminum section, spray finished in RAL 7035.

For enclosure depth	Packs of	Order No.
250.4 mm	2	3981350
310.4 mm	2	3981360
370.4 mm	2	3981370
430.4 mm	2	3981380

German patent no. 40 34 773

Rear Adjustable Feet



For retro-fitting to the rear. Dual function:

- Mechanical protection of connection components
- Also acts as a cable tidy during transportation

Material:
PA, color RAL 7035 to UL 94-V0, self-extinguishing

Packs of	Order No.
4	3901000

Earthing Set



For connecting the cover plates/gland plates to the side panels with PE conductors.

Supply Includes:
Green/yellow PE conductor cable, 1.5mm², with washer, flat eyebolt and assembly parts

Packs of	Order No.
4	3900000

Support Stand/Carrying Handle



To fit all 3U, 4U and 6U enclosures, adjustable on a 30 degree increments.

Material:
Extruded aluminum section/die-cast, spray finished in RAL 7035

Supply Includes:
1 support stand/carrying handle, assembly parts

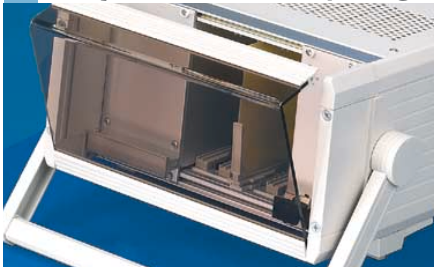
Note: Corner trim for support stands/carrying handles should be ordered separately.

For Ripac Vario-Module	Packs of	Order No.
42HP	1	3981390
63HP	1	3981400
84HP	1	3981410

German patent no. 41 10 873

Corner trim for VM	Packs of	Order No.
3U	2	3981310
4U	2	3981500
6U	2	3981510

Acrylic Front Doors, Hinged



To protect installed control components.

Material:
Side panels: Aluminum, spray finished in RAL 7035
Window: Smoked acrylic

Supply Includes:
1 front door, assembly parts

U	For Ripac Vario-Module	Packs of	Order No.
3	42HP	1	3981420
3	63HP	1	3981430
3	84HP	1	3981440
4	84HP	1	3981450
6	84HP	1	3981460
7	84HP	1	3981470

German patent no. 41 10 872

Keyboard Lid 4U, 84 HP



For retrospective, front mounting on a 4U high, 84HP wide Ripac Vario-Module.

Suitable for accommodating mechanical or sealed-membrane keyboards.

Material:
Aluminum, spray finished in RAL 7035

U	Packs of	Order No.
4	1	3981480

In Detail:

RiCase

RiCase, the all-metal enclosure, provides the perfect framework for valuable electronics. Extruded aluminum sections and die-cast components create an extremely robust yet lightweight enclosure. The screw fastenings are concealed by specially designed and protective elements. Mounting angles at the front and rear allow the installation of 482.6 mm (19") components. The RiCase desktop enclosure is supplied "flatpack", i.e. partially assembled with ready-made side panels, cover and base trays. Handles, a support stand/carrying handle, a folding keyboard or a glazed door are easily retrofitted.

Design Features/EMC Measures



A High Level Of Stability
and protection due to extruded aluminum sections and die-cast components.



Stable, Non-slip Design
guaranteed by 10 mm high corner caps. The resulting gap to the desktop or lower enclosure offers good airflow and ventilation conditions.



Symmetrical Layout
for 482.6 mm (19") population at front and rear. Mounting angles front and rear allow installation of 482.6 mm (19") components.



Depth- And Height-variable Installation
with the aid of slide-in strips. Simply slide into the desired channel and attach as required.



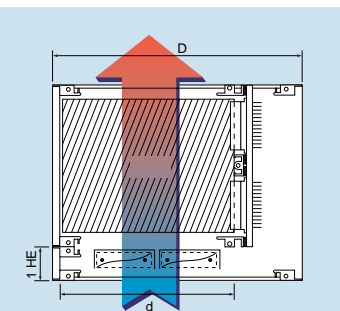
For Door Fitting
the slide-in strip without tapped holes can be exchanged for a slide-in strip with tapped holes.



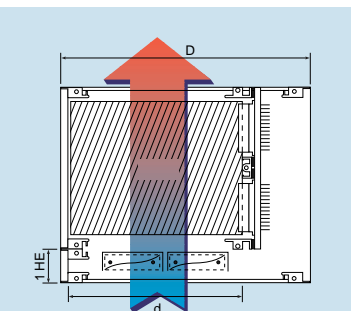
Cooling



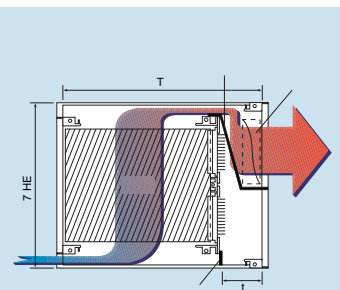
Vertical Ventilation
Holes in the base and cover trays allow natural convection from bottom to top.



Ventilation can be additionally improved by fitting a rack-mounted fan.



Diagonal Ventilation
Air inlet is at the front via a front panel with vent slots. The heated interior air is dissipated via a fan mounted on the rear door.



Product Information

RiCase



Color Variants



RAL 5018



RAL 5012



RAL 7030

- Desktop enclosure for the installation of 482.6 mm (19") rack-mounted equipment and components
- All-metal design affords a high level of mechanical protection
- Ergonomic handle, base and door variants
- For mobile and stationary use
- 3 color variants as standard

RiCase enclosures are supplied in three color variants as standard. Other colors can also be supplied on request.

In Detail:

RiCase

RiCase enclosures can be configured individually to suit the respective application using doors, handles and front and rear panels.

Handling



Horizontal Carrying Handles
allow easy transportation, even of populated enclosures.



Support Stand/carrying Handle
for portable use, adjusts in 30° increments.
(Order No. see page 258).



Tower Feet
ensure stability of the enclosures, even with vertical installation.



Precise Stackability
is guaranteed, thanks to the designer corners of the bottom and top RiCase, which slot into one another in a non-slip, stable arrangement.

Doors And Covers



The rear is sealed with a blanking plate. However, the symmetrical arrangement also permits population from the rear.
(Order No. see page 261).



A hinged blanking plate improves handling and provides easier access to the rear components
(Order No. see page 261).



The hinged rear door (also for fan installation) is equipped with a security lock.
(Order No. see page 260).



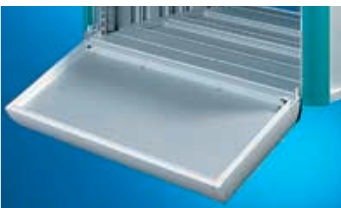
Depending on sitting conditions, the horizontally hinged rear panel can prove particularly useful e.g. for use with the tower version.
(Order No. see page 261).



The Front Door
– featuring acrylic glazing or aluminum plate with left-hand or right-hand hinge, as required – protects the display and control components. The painted aluminum frame section is equipped with a security lock
(Order No. see page 259).



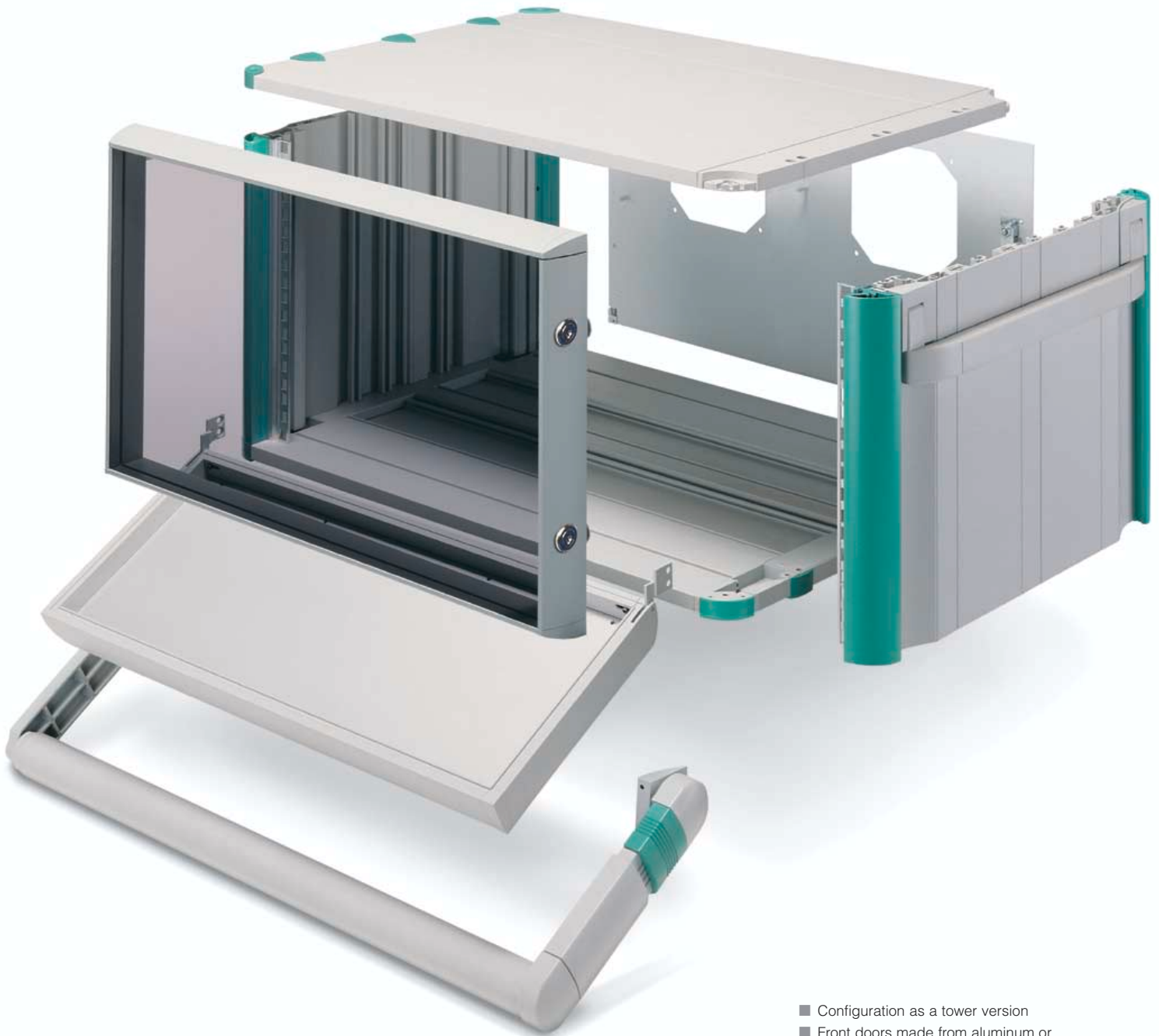
Tower Version
In conjunction with a corresponding front door and tower feet, RiCases may be configured as tower enclosures.



Keyboard Lid
Suitable for the installation of 482.6 mm (19") keyboards. Horizontally hinged with security lock.
(Order No. see page 258).

Product Information

RiCase



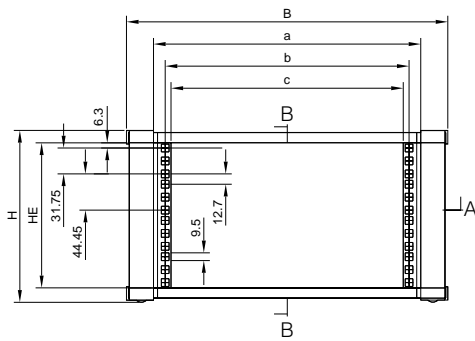
- Configuration as a tower version
- Front doors made from aluminum or acrylic glazing
- Stackable

Order Information

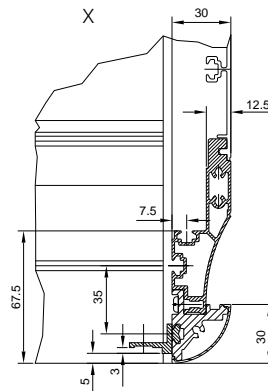
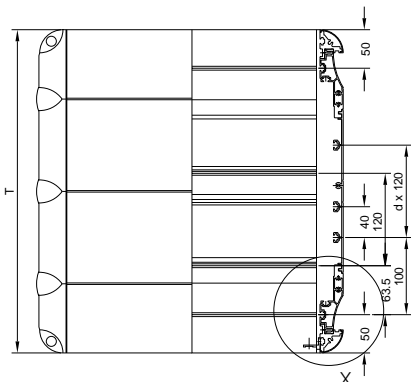
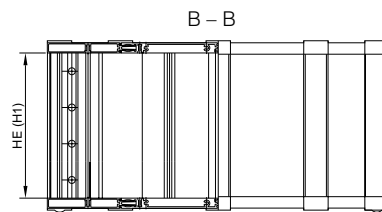
RiCase 269.2 mm (.5 19")/1U, 2U, 3U, 4U

Enclosure for subrack width 269.2 mm (1/2 19")	Packs of	1U		2U		3U			4U		Page
Depth (T) mm		300.0	420.0	300.0	540.0	300.0	420.0	540.0	420.0	540.0	
Order No. RC Non vented, RAL 5018	1	3750100	–	3750200	–	3750210	3750300	–	3750400	–	
Order No. RC Non vented, RAL 5012*	1	3750102	–	3750202	–	3750212	3750302	–	3750402	–	
Order No. RC Non vented, RAL 7030*	1	3750104	–	3750204	–	3750214	3750304	–	3750404	–	
Order No. RC Vented, RAL 5018	1	–	3750110	–	3750220	–	3750350	3750360	–	3750450	
Order No. RC Vented, RAL 5012*	1	–	3750112	–	3750222	–	3750352	3750362	–	3750452	
Order No. RC Vented, RAL 7030*	1	–	3750114	–	3750224	–	3750354	3750364	–	3750454	
H		77.5	77.5	121.9	121.9	166.4	166.4	166.4	210.8	210.8	
H1		45.0	45.0	89.4	89.4	133.8	133.8	133.8	178.3	178.3	
B		348.6	348.6	348.6	348.6	348.6	348.6	348.6	348.6	348.6	
a		280.6	280.6	280.6	280.6	280.6	280.6	280.6	280.6	280.6	
b		251.6	251.6	251.6	251.6	251.6	251.6	251.6	251.6	251.6	
c		237.2	237.2	237.2	237.2	237.2	237.2	237.2	237.2	237.2	
d		–	1	–	2	–	1	2	1	2	
Weight (kg) vented/non vented		3.3/3.4	4.2/4.4	3.7/3.8	5.4/6.1	4.1/4.2	5.2/5.4	6.1/6.8	5.8/6.0	6.8/7.5	
Accessories											
Horizontal carrying handles	2	3751250	3751260	3751250	3751270	3751250	3751260	3751270	3751260	3751270	258
Support stand/ carrying handle	RAL 5018	1	3751200	3751200	3751200	3751200	3751200	3751200	3751200	3751200	258
	RAL 5012*	1	3751202	3751202	3751202	3751202	3751202	3751202	3751202	3751202	258
	RAL 7030*	1	3751204	3751204	3751204	3751204	3751204	3751204	3751204	3751204	258
Blanking plate/rear panel	3	3746000	3746000	3747000	3747000	3748000	3748000	3748000	3749000	3749000	260
Front door, vertically hinged	1	–	–	–	–	3751300	3751300	3751300	3751300	3751300	254
Slide rails	2	3751500	3751510	3751500	3751520	3751500	3751510	3751520	3751510	3751520	256
Mounting angles, 482.6 mm (19")	2	3751650	3751650	3751660	3751660	3751670	3751670	3751670	3751680	3751680	256
Threaded inserts	8	3751700	3751700	3751710	3751710	3751720	3751720	3751720	3751730	3751730	256
Trim section	2	–	–	–	–	3751900	3751900	3751900	3751910	3751910	257

* Extended delivery times



B = Width
T = Depth
HE = U



RiCase 269.2 mm (.5 19")/1U, 2U, 3U, 4U



Technical Specifications:

Depth: 300 mm, 420 mm, 540 mm
 Installation Width:
 269.2 mm (1/2 19")
 Installation Options:
 269.2 mm (1/2 19") slide-in equipment
 and modular assemblies to DIN 41
 494, part 5 and IEC 60 297-3
 Protection Category:
 IP 42 non vented version.

Material/Surface Finish:

Cover trays: Extruded aluminum
 section/die-cast, spray finished
 in RAL 7035
 Side panels: Extruded aluminum
 section, spray finished in RAL 7035,
 colors RAL 5018/5012/7030*
 Corner caps: Plastic, RAL
 5018/5012/7030* 482.6 mm (19") mount-
 ing bracket: Extruded aluminum section,
 clear chromated

Supply Includes:

2 side panels
 2 cover trays
 8 corner caps
 8/12/16 cover caps
 (300 /420 / 540 mm depth)
 4 482.6 mm (19") mounting angles
 4 threaded inserts
 4 plain inserts
 1 rear panel

Enclosures are supplied
 partially assembled

* RAL 5018: turquoise
 RAL 5012: light blue
 RAL 7030: stone gray
 RAL 7035: light gray

**Special dimensions and
 colors on request.**

**RiCase accessories
 from pages 256-261**

**Subrack systems
 from page 146**



Hinged Blanking Plate

Vertically hinged for installation into
 electronic enclosures or cases.



The Horizontal Carrying Handles

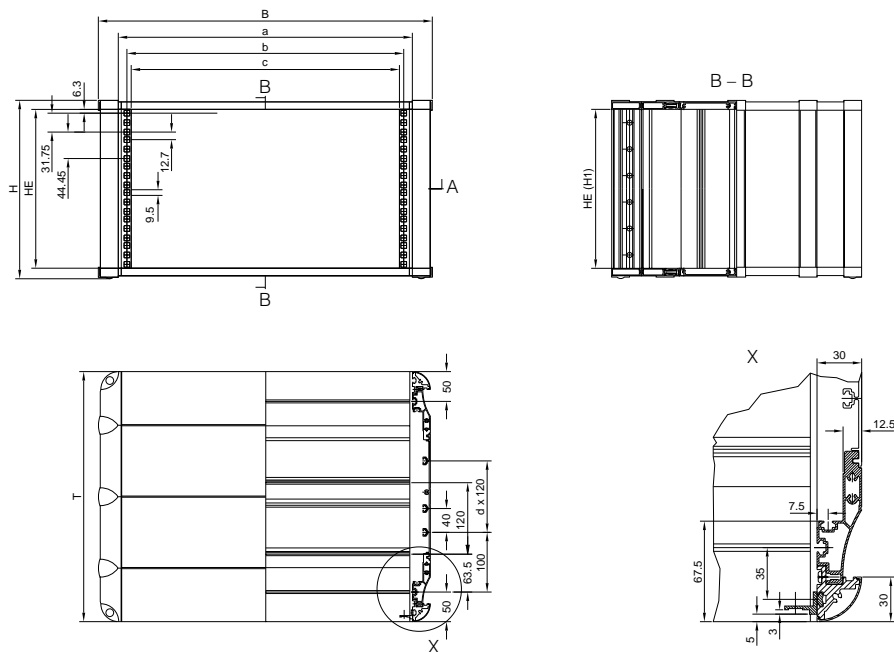
with a load bearing capacity of up to
 30 kg, are easily retro-fitted.

Order Information

RiCase 482.6 mm (19")/3U, 4U, 6U, 7U

Enclosure for sub racks width 482.6 mm (19")		P. of	3U		4U		6U			7U		9U		12U
Depth (T) mm			300.0	420.0	300.0	420.0	300.0	420.0	540.0	420.0	540.0	420.0	540.0	540.0
Order No. RC Non-vented, RAL 5018		1	3750310	3750320	3750410	3750420	3750600	3750610	3750620	3750700	3750710	3750900	3750910	3750000
Order No. RC Non-vented, RAL 5012*		1	3750312	3750322	3750412	3750422	3750602	3750612	3750622	3750702	3750712	3750902	3750912	3750002
Order No. RC Non-vented, RAL 7030*		1	3750314	3750324	3750414	3750424	3750604	3750614	3750624	3750704	3750714	3750904	3750914	3750004
Order No. RC Vented, RAL 5018		1	3750330	3750340	3750430	3750440	3750630	3750640	3750650	3750720	3750730	3750920	3750930	3750030
Order No. RC Vented, RAL 5012*		1	3750332	3750342	3750432	3750442	3750632	3750642	3750652	3750722	3750732	3750922	3750932	3750032
Order No. RC Vented, RAL 7030*		1	3750334	3750344	3750434	3750444	3750634	3750644	3750654	3750724	3750734	3750924	3750934	3750034
H			166.4	166.4	210.8	210.8	299.7	299.7	299.7	344.2	344.2	433.1	433.1	566.5
H1			133.8	133.8	178.3	178.3	267.2	267.2	267.2	311.7	311.7	400.6	400.6	534.0
B			562.0	562.0	562.0	562.0	562.0	562.0	562.0	562.0	562.0	562.0	562.0	562.0
a			494.0	494.0	494.0	494.0	494.0	494.0	494.0	494.0	494.0	494.0	494.0	494.0
b			465.0	465.0	465.0	465.0	465.0	465.0	465.0	465.0	465.0	465.0	465.0	465.0
c			450.6	450.6	450.6	450.6	450.6	450.6	450.6	450.6	450.6	450.6	450.6	450.6
d			-	1	-	1	-	1	2	1	2	1	2	2
Weight (kg)	vented		5.3	6.9	5.7	7.5	6.5	8.5	10.8	9.1	11.5	10.1	12.9	15.0
	non vented		5.4	7.1	7.2	7.7	6.6	8.7	12.2	9.3	12.9	10.3	14.3	16.4
Accessories														
Horiz. carrying handles		2	3751250	3751260	3751250	3751260	3751250	3751260	3751270	3751260	3751270	3751260	3751270	3751270
Support stand/carrying handles	RAL 5018	1	3751210	3751210	3751210	3751210	3751210	3751210	3751210	3751210	3751210	3751210	3751210	3751210
	RAL 5012*	1	3751212	3751212	3751212	3751212	3751212	3751212	3751212	3751212	3751212	3751212	3751212	3751212
	RAL 7030*	1	3751214	3751214	3751214	3751214	3751214	3751214	3751214	3751214	3751214	3751214	3751214	3751214
Blanking plate/rear panel		3	3751600	3751600	3751610	3751610	3751620	3751620	3751620	3751630	3751630	3751530	3751530	3751540
Rear door, solid		1	3751100	3751100	3751110	3751110	3751120	3751120	3751120	3751130	3751130	-	-	-
Rear door, for fan		1	3751150	3751150	3751160	3751160	3751170	3751170	3751170	3751180	3751180	-	-	-
Front door, vert. hinged		1	3751320	3751320	3751330	3751330	3751340	3751340	3751340	3751350	3751350	-	-	-
Slide rails		2	3751500	3751510	3751500	3751510	3751500	3751510	3751520	3751510	3751520	3751510	3751510	3751520
Mounting angles, 482.6 mm (19")		2	3751670	3751670	3751680	3751680	3751690	3751690	3751690	3751640	3751640	3751780	3751780	3751790
Threaded inserts		8	3751720	3751720	3751730	3751730	3751740	3751740	3751740	3751750	3751750	3751760	3751760	3751770
Trim section		2	3751900	3751900	3751910	3751910	3751920	3751920	3751920	3751930	3751930	3751820	3751820	3751830

* Extended delivery times



B = Width
T = Depth
HE = U

**Technical Specifications:**

Depth: 300 mm, 420 mm and 540 mm

Installation Width:
482.6 mm (19")

Installation Options:
482.6 mm (19") slide-in equipment and modular assemblies to DIN 41 494, part 5 and IEC 60 297-3

Protection Category:
IP 42 non vented version.

Material/Surface Finish:

Cover Trays: Extruded aluminum section/die-cast, spray finished in *RAL 7035

Side Panels: Extruded aluminum section, spray finished in RAL 7035, colors RAL 5018/5012/7030*

Corner Caps: Plastic, RAL 5018/5012/7030*

482.6 mm (19") Mounting Angles:
Extruded aluminum section, clear chromated

Supply Includes:

- 2 side panels,
- 2 cover trays,
- 8 corner caps,
- 8/12/16 cover caps (300/420/540 mm depth),
- 2 482.6 mm (19") mounting angles,
- 2 threaded inserts,
- 4 untapped strips.

Enclosures are supplied partially assembled.

* RAL 5018: turquoise
RAL 5012: light blue
RAL 7030: stone gray
RAL 7035: light gray

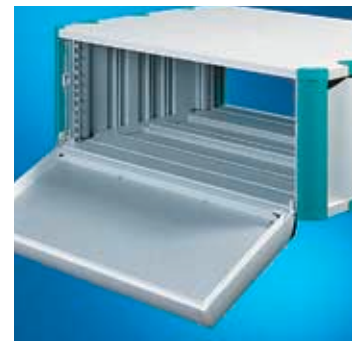
Special dimensions and colors on request.

RiCase accessories from pages 256-261

Subrack-systems from page 146



The Support Stand/carrying Handle of solid aluminum, is adjustable on a 30° increments.



The Keyboard Lid is designed for 482.6 mm (19") keyboards and has a security lock.

Accessories

RiCase – Interior Installation

Mounting Angles For 482.6 mm (19")



For additional installation of subracks.

Material:

Extruded aluminum sections, clear chromated

Supply Includes:

2 mounting angles
Assembly parts

Note: 1 pack of threaded inserts and 2 packs of mounting rails and spacers are required for depth-adjustable installation.

For enclosure height	Packs of	Order No.
1U	2	3751650
2U	2	3751660
3U	2	3751670
4U	2	3751680
6U	2	3751690
7U	2	3751640
9U	2	3751780
12U	2	3751790

Slide Rails



To support heavy slide-in equipment.

Material:

1.5 mm sheet steel, yellow passivated

Supply Includes:

2 slide rails, assembly parts

Note: Threaded inserts should be ordered separately.

Enclosure depth	Packs of	Order No.
300 mm	2	3751500
420 mm	2	3751510
540 mm	2	3751520

Threaded Inserts



For fastening mounting angles, slide rails, mounting kits, cable trunking etc. Slides into the grooves of the side panels.

Material:

Extruded aluminum sections, clear chromated

Supply Includes:

8 threaded inserts

For enclosure height	Packs of	Order No.
1U	8	3751700
2U	8	3751710
3U	8	3751720
4U	8	3751730
6U	8	3751740
7U	8	3751750
9U	8	3751760
12U	8	3751770

Earthing Set



For compliance with electrical protection measures; fits all Rittal RiCase enclosures.

Supply Includes:

Insert strip, pointed grub screws, green/yellow connection lead, serrated washer, nut

Packs of	Order No.
4	3798000

Mounting Rails



- For depth-variable installation of the mounting angles
- For static or pull-out installation of component shelves

Material:

Aluminum, clear chromated

Supply Includes:

2 mounting rails
Assembly parts

Note: Threaded inserts and spacers should be ordered separately.

For enclosure depth	Packs of	Order No.
420 mm	2	3751410
540 mm	2	3751420

RiCase – Interior Installation

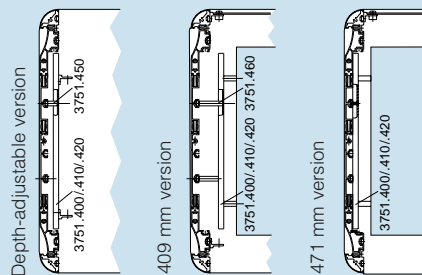
Spacers



For securing mounting rails. With 471 mm component shelves, the mounting rails are screwed directly to the side panel.

Supply Includes:
4 spacers

Note: Threaded inserts should be ordered separately.



Assembly kit for	Packs of	Order No.
Depth-adjustable mounting angles	4	3751450
Component shelf installation 409mm wide ²	4	3751460
Component shelf installation 417 mm wide ²	Direct installation	

Trim Section

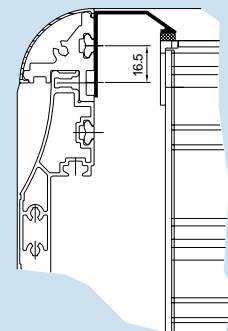


To cover the sides on the left and right of the subrack when no rear door or rear panel is used.

Material:
Extruded aluminum section, spray finished in RAL 7035

Supply Includes:
2 trim sections
Assembly parts

For enclosure height	Packs of	Order No.
3U	2	3751900
4U	2	3751910
6U	2	3751920
7U	2	3751930
9U	2	3751820
12U	2	3751830



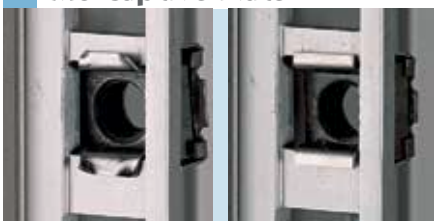
M6 Assembly Screws



For captive nuts, including plastic washers.

Description	Packs of	Order No.
Cheese-head screw	100	2093200
Phillips-head screw	100	2089000

M6 Captive Nuts



For fastening accessories **with** contact of the subrack to the enclosure/frame.

Packs of	Order No.
50	2094200

For fastening accessories **without** contact of the subrack to the enclosure/frame.

Packs of	Order No.
50	2092200

Accessories

RiCase – External Mounting

Horizontal Carrying Handles



- For easy, secure transportation
- May be retrofitted
 - Load capacity 30 kg/pair

Material:

End pieces: Die-cast, spray finished in RAL 7035
Center part: Extruded aluminum section, painted in RAL 7035

Supply Includes:

2 carrying handles, assembly parts

For enclosure depth	Packs of	Order No.
300 mm	2	3751250
420 mm	2	3751260
540 mm	2	3751270

Support Stand/Carrying Handles



- Support stand/carrying handle adjustable in 30° increments
- Suitable for retro-fitting to 2 – 7U
- For 269.2 mm (1/2 19") and 482.6 mm (19") wide enclosures
- Load capacity 30 kg

Material:

Hinged part: Die-cast, spray finished in RAL 7035, other colors RAL 5018/5012/7030

Center part: Extruded aluminum section, spray finished in RAL 7035 with plastic coating

Supply Includes:

1 support stand/carrying handle
Assembly parts



RAL 5018

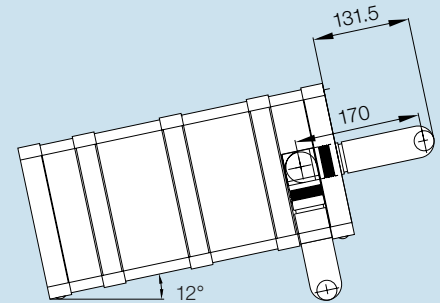
RAL 5012

RAL 7030

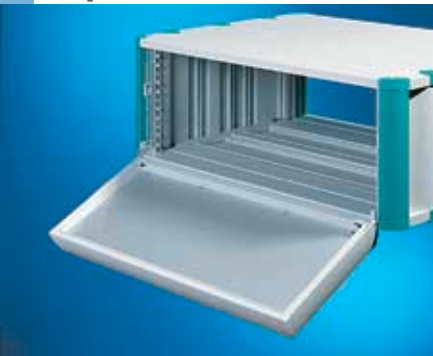
For enclosure width	Col. RAL	W mm	Order No.
269.2 mm (1/2 19")	5018	392	3751200
269.2 mm (1/2 19")	5012*	392	3751202
269.2 mm (1/2 19")	7030*	392	3751204
482.6 mm (19")	5018	605	3751210
482.6 mm (19")	5012*	605	3751212
482.6 mm (19")	7030*	605	3751214

W = total width handle

* Extended delivery times



Keyboard Lid



Suitable for the installation of 482.6 mm (19") keyboards.

- Horizontally hinged with security lock
- Removable cover plate

Material:

Frame section: Extruded aluminum section/ die-cast, spray finished in RAL 7035

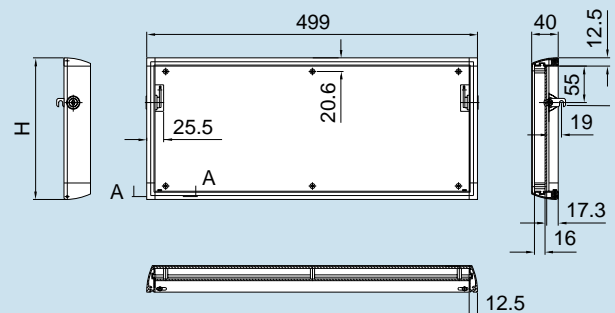
Base and cover plate: Aluminum, spray finished in RAL 7035

Supply Includes:

1 keyboard lid, assembly parts

Note: Only in conjunction with support stand/ carrying handle.

For enclosure width	H (U)	Packs of	Order No.
482.6 mm (19")	4	1	3751800
482.6 mm (19")	6	1	3751810



RiCase – External Mounting

Front Door, Vertically Hinged



For mechanical protection of built-in control components.

- Optional right-hand or left-hand hinges
- With security lock

Material:

Frame section: Extruded aluminum section, spray finished in RAL 7035

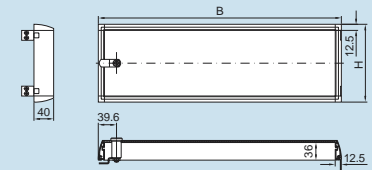
Corner pieces: Die-cast aluminum, spray finished in RAL 7035

Pane: Smoked acrylic

Supply Includes:

1 front door, assembly parts

For enclosure width	W (B) mm	H (U)	Order No.
269.2 mm (1/2 19")	289	3	3751300
269.2 mm (1/2 19")	289	4	3751310
482.6 mm (19")	503	3	3751320
482.6 mm (19")	503	4	3751330
482.6 mm (19")	503	6	3751340
482.6 mm (19")	503	7	3751350



Aluminum Front Door, Vertically Hinged



For mechanical protection of built-in control components.

- Optional right-hand or left-hand hinges
- With security lock

Material:

Frame section: Extruded aluminum section, spray finished in RAL 7035

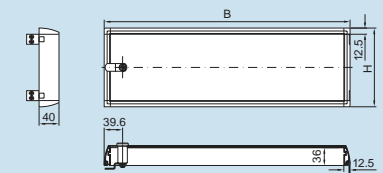
Corner pieces: Die-cast aluminum, spray finished in RAL 7035

Aluminum plate

Supply Includes:

1 front door, assembly parts

For enclosure width	W (B) mm	H (U)	Order No.
482.6 mm (19")	503	3	3751360
482.6 mm (19")	503	4	3751370
482.6 mm (19")	503	6	3751380



Front Door For Tower



For mechanical protection of built-in control components.

- Optional right-hand or left-hand hinges
- With security lock

Material:

Frame section: Extruded aluminum section, spray finished in RAL 7035

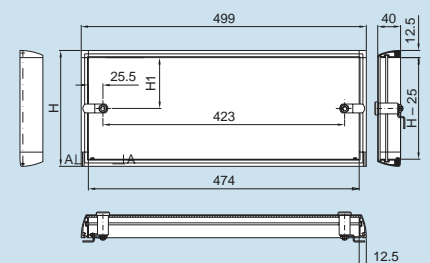
Corner pieces: Die-cast aluminum, spray finished in RAL 7035

Pane: Smoked acrylic

Supply Includes:

1 front door, assembly parts

For enclosure width	W (B) mm	H (U)	Order No.
482.6 mm (19")	503	3	3751390
482.6 mm (19")	503	4	3751430



Tower Feet



For vertical positioning of enclosures. May be retrofitted.

Material:

Plastic to UL 94-V0, self-extinguishing RAL 5018

Supply Includes:

4 tower feet, assembly parts

Color RAL	Packs of	Order No.
5018	1 set	3751850
5012	1 set	3751852
7030	1 set	3751854



RAL 5018

RAL 5012

RAL 7030

Accessories

RiCase – External Mounting

Rear Panel



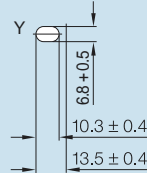
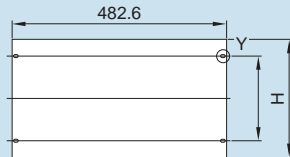
To cover the rear. May be screw fastened, incl. mounting angles.

Material:
2/3 mm aluminum, natural anodized

Supply Includes:
1 rear panel
2 482.6 mm (19") mounting angles
Assembly parts

For enclosure width 482.6 mm (19")

e1	e2	H (U)	Packs of	Order No.
57.15	–	3	1	3751600
101.6	–	4	1	3751610
190.5	–	6	1	3751620
57.15	88.9	7	1	3751630
120.6	101.6	9	1	3751530
190.6	13.3	12	1	3751540



Rear Door, Solid



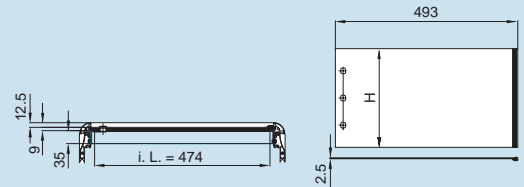
To cover the rear.

- Hinged, with security lock
- Optional right-hand or left-hand hinges

Material:
Aluminum, spray finished in RAL 7035

Supply Includes:
1 rear door, hinged
Assembly parts

For enclosure width	H (U)	Packs of	Order No.
482.6 mm (19")	3	1	3751100
482.6 mm (19")	4	1	3751110
482.6 mm (19")	6	1	3751120
482.6 mm (19")	7	1	3751130



Rear Door, For Fan Installation



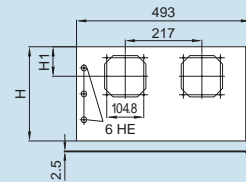
To cover the rear.

- With security lock
- Optional right-hand or left-hand hinges
- For 120 mm fan

Material:
Aluminum, spray finished in RAL 7035

Supply Includes:
1 rear door, hinged
Assembly parts

For enclosure width	H (U)	H1	Order No.
482.6 mm (19")	3	66.65	3751150
482.6 mm (19")	4	88.90	3751160
482.6 mm (19")	6	83.50	3751170
482.6 mm (19")	7	83.50	3751180



Fan Expansion Kit



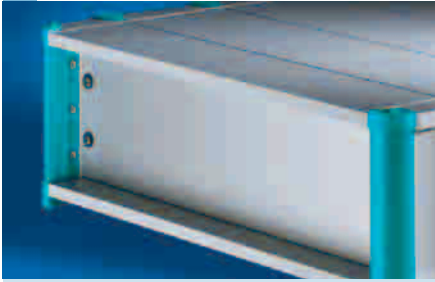
With one fan, including assembly parts and connection cable (0.61 m).

Technical Specifications:
Rated operating voltage: 230 V/115 V
Power consumption: 19/18 W at 50/60 Hz
Air throughput (unimpeded air flow):
140/165 m³/h, 50/60 Hz
Temperature range: – 10° C to + 55° C

Fan	Packs of	Order No.
230 V AC	1 set	7980000
115 V AC	1 set	7980110

RiCase – External Mounting

Blanking Plates



Material:
 3 mm aluminum, natural anodized
 482.6 mm (19")
 2 mm aluminum, natural anodized
 269.2 mm (1/2 19")
Note: Order mounting angles for 482.6 mm (19") blanking plates separately if used as rear panel.

U	Packs of	Order No. 269.2 mm (1/2 19")	Order No. 482.6 mm (19")
1	3	3746000	1931200
2	3	3747000	1932200
3	3	3748000	1933200
4	3	3749000	1934200
6	3	–	1936200
7	3	–	1935200
9	3	–	1939200
12	3	–	1937200

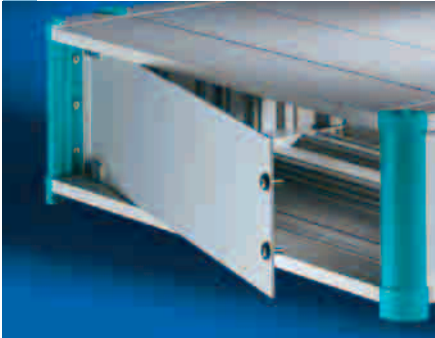
Ventilation Front Plates



For venting enclosures from front or rear.
Material:
 3 mm aluminum, natural anodized

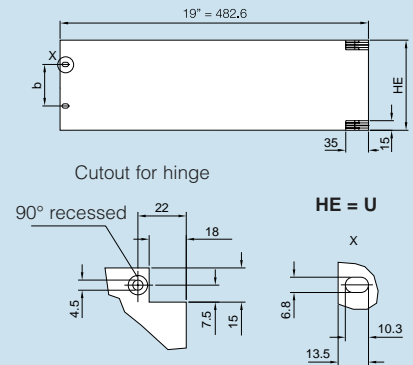
Width	U	P. of	Order No.
482.6 mm (19")	1	3	2231000
482.6 mm (19")	2	3	2232000
482.6 mm (19")	3	3	2233000

Blanking Plate, Vertically Hinged



For installation in electronic enclosures or cases.
Material:
 Hinges: Die-cast zinc, zinc-plated
 Blanking plate: 3 mm aluminum, natural anodized
Supply Includes:
 2 hinges, 1 front plate, assembly parts
Note: Order mounting angles for 482.6 mm (19") cases separately if used as rear panel.

Width	U	b mm	Order No.
482.6 mm (19")	3	57.15	1940000
482.6 mm (19")	6	190.50	1941000



Blanking Plate, Horizontally Hinged



For installation in electronic enclosures or cases.
Material:
 Hinges: Die-cast zinc, zinc-plated
 Blanking plate: 3 mm aluminum, natural anodized
Supply Includes:
 2 hinges, 1 front plate, assembly parts
Note: Order mounting angles for 482.6 mm (19") cases separately if used as rear panel.

Width	U	b mm	Order No.
482.6 mm (19")	3	37.7	1944000
482.6 mm (19")	6	37.7	1945000

